

LEZIONE 2

LA LUCE DEL MONDO

La luce del mondo



Il mondo della luce

Spirituale

Naturalistica

Analitica

Artificiale

L'interiore

Il timing

La durata

L'esteriore

No time

La rappresentazione

La tecnica

La finestra

La città

Il paesaggio

Il racconto

La vetrina

Precedenti

Le ottiche

Impressionismo, 1874

Superfici

Sfumature

Virgole-Tratti

Punti

Simbolicità e
astrazione

Fauve

Postimpressi
onismo

La
simulazione

Dopo
l'Ottocento

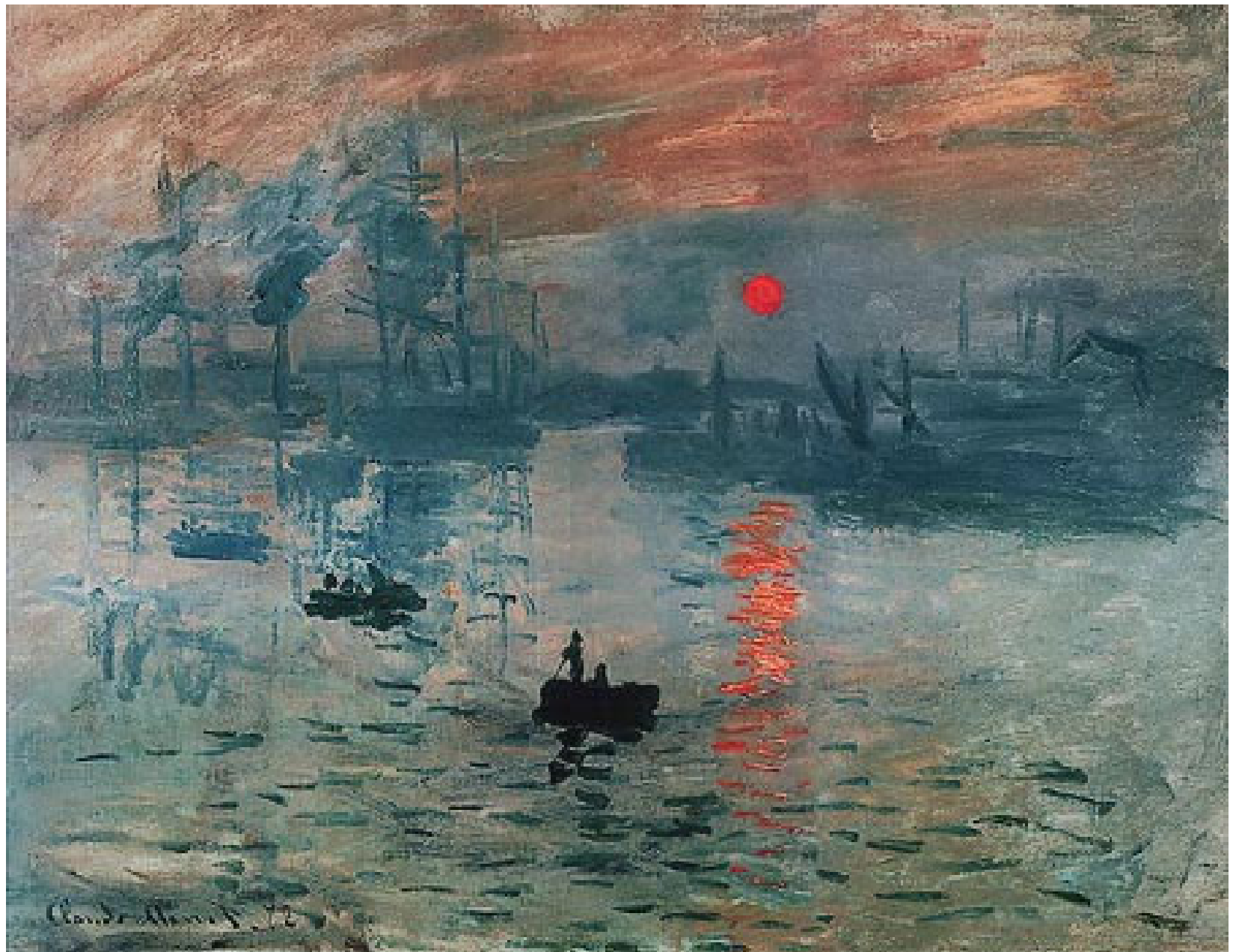
Dopo
l'Ottocento

Dopo
l'Ottocento

Dopo
l'Ottocento



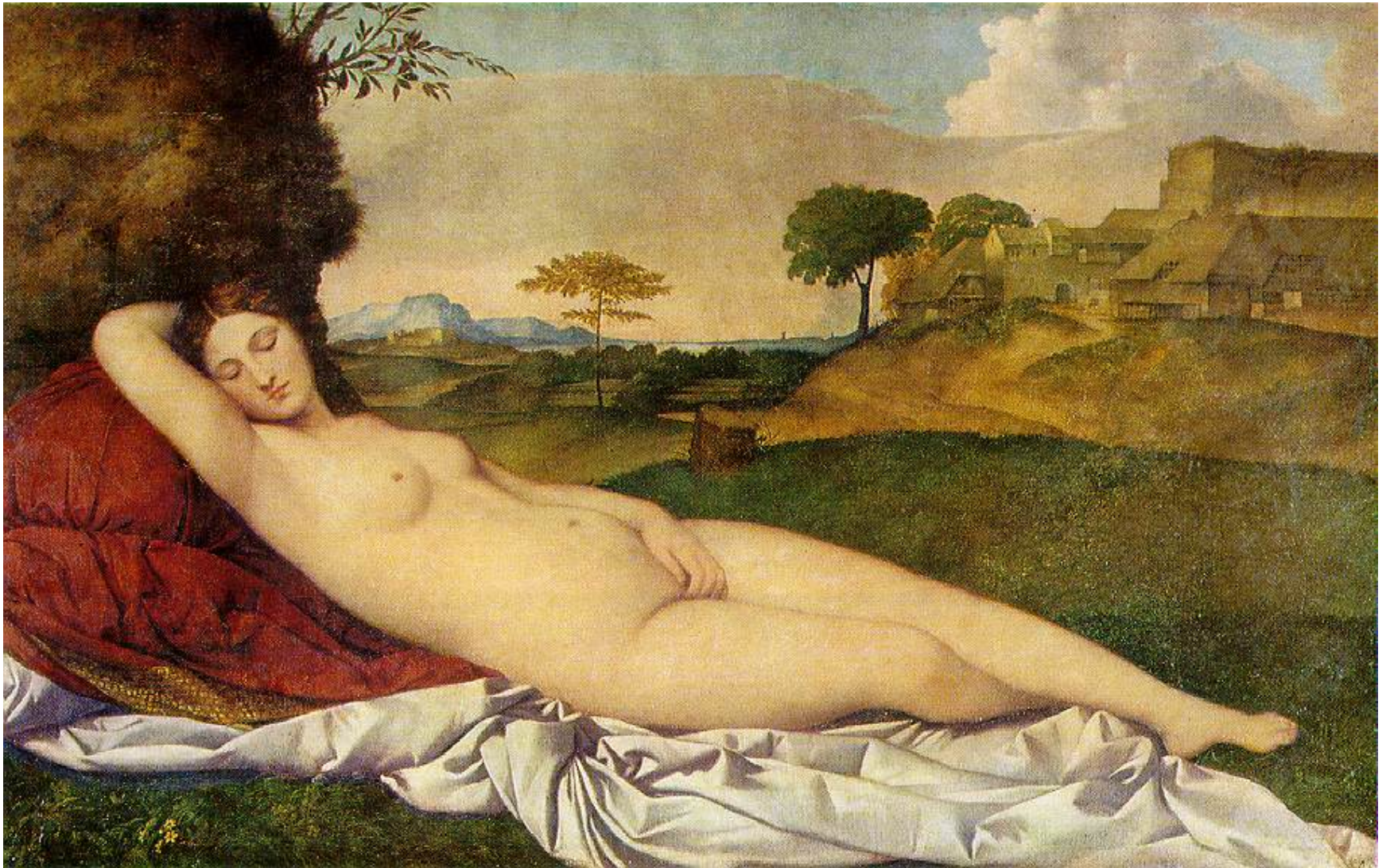
Joseph Mallord Turner, *Norham Castle, Sunrise*, 1845 ca, Tate Gallery, Londra.



Claude Monet, *Impression. Soleil levant*, 1872, Musee Marmottan, Paris.



Giorgione, *La tempesta*, 1502-03, Gallerie dell'Accademia, Venezia.



Giorgione, *Venere dormiente*, 1508-10, Gemälde Galerie, Dresda.



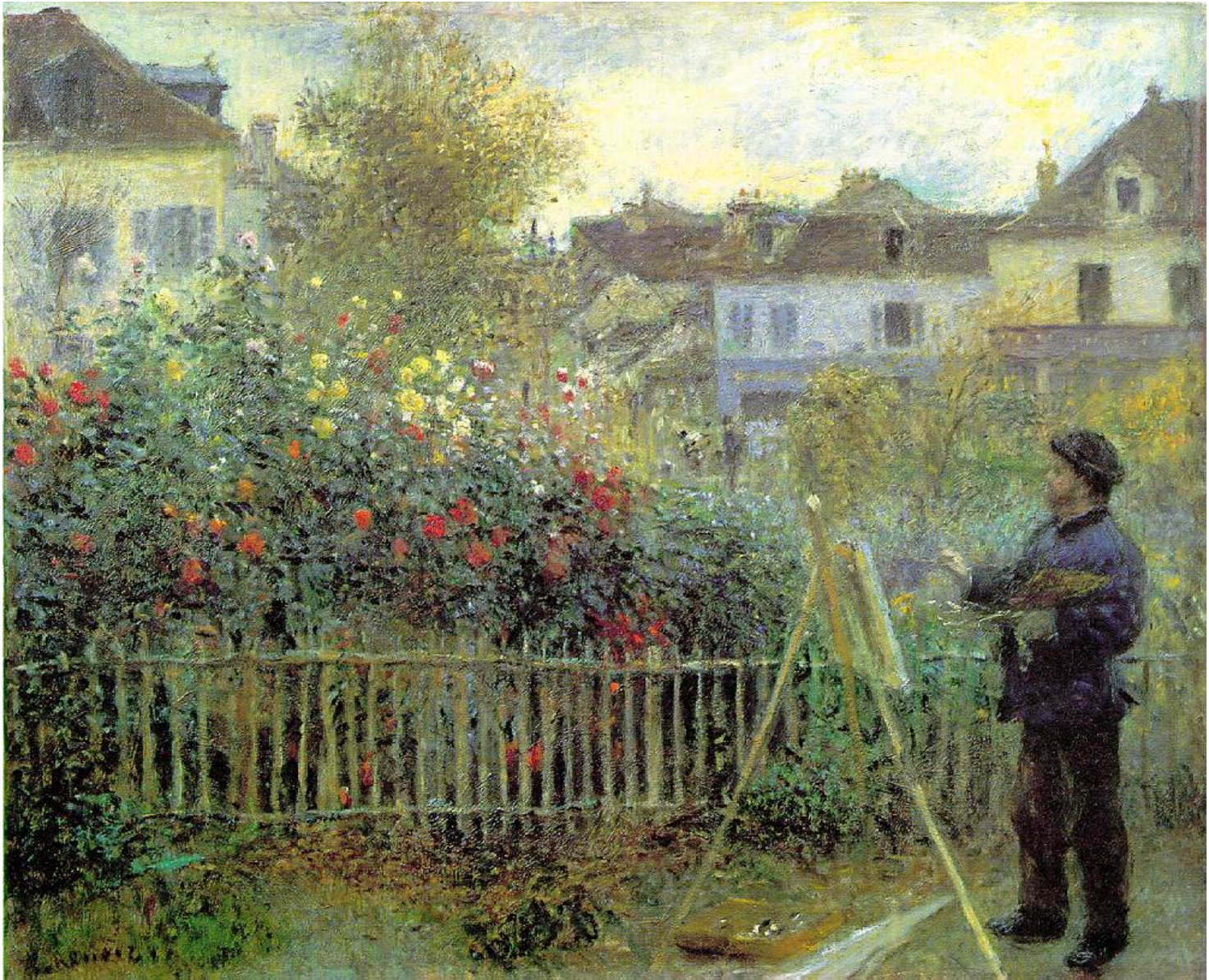
Tiziano, *Concerto campestre*, 1511 ca, Louvre.



Edouard Manet, *Le Déjeuner sur l'Herbe*, 1862-63, Musée d'Orsay, Paris.



Eduard Manet, *La famiglia Monet nel giardino ad Argenteuil*, 1874, Metropolitan Museum of Art, New York.



August Renoir, *Monet che dipinge nel suo giardino ad Argenteuil*, 1873. Wadsworth Atheneum, Hartford.



Claude Monet, *Peupliers*, 1889, The Fitzwilliam Museum, Cambridge, U.K.



Camille Pissarro, *Strada, inverno e neve*, 1870 ca, The Carmen Thyssen-Bornemisza Collection, Madrid.



Eduard Manet, *Il balcone*, 1868, Musée d'Orsay, Parigi.



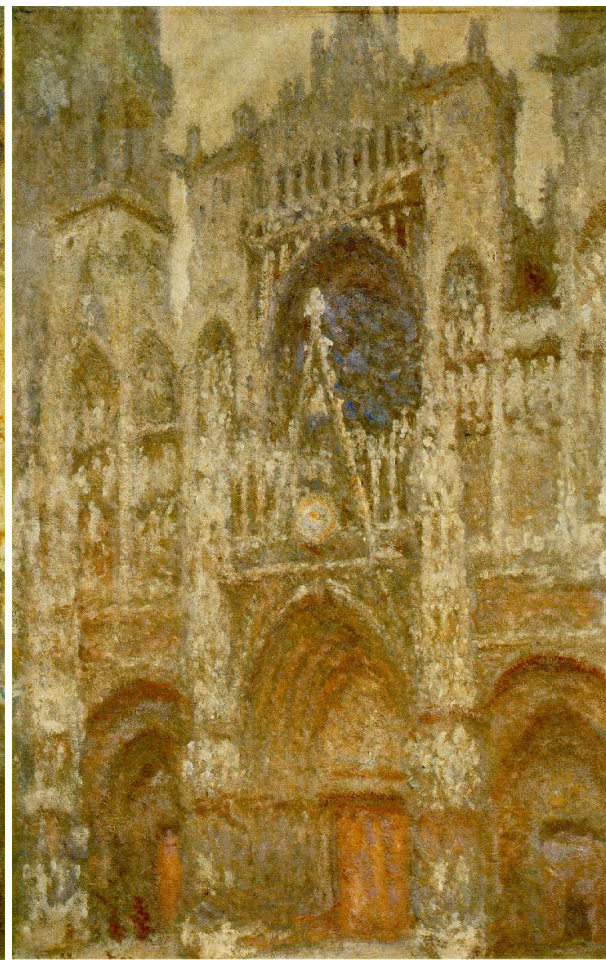
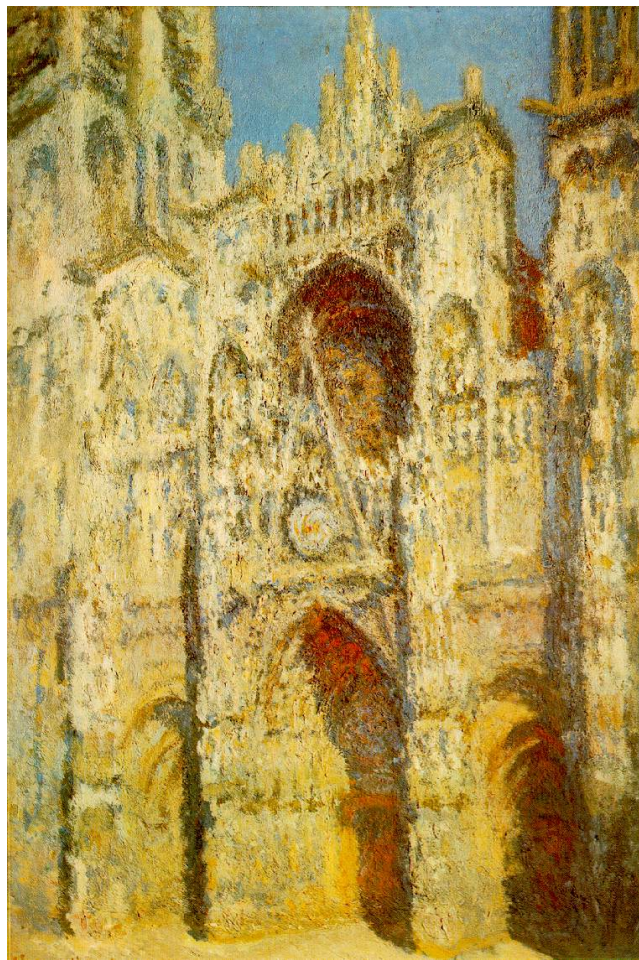
Eduard Manet, *In barca*, 1874, Metropolitan Museum, New York.



Auguste Renoir, *Ballo al Moulin de la Gallette, Montmartre*, 1876, Musee d'Orsay, Parigi.



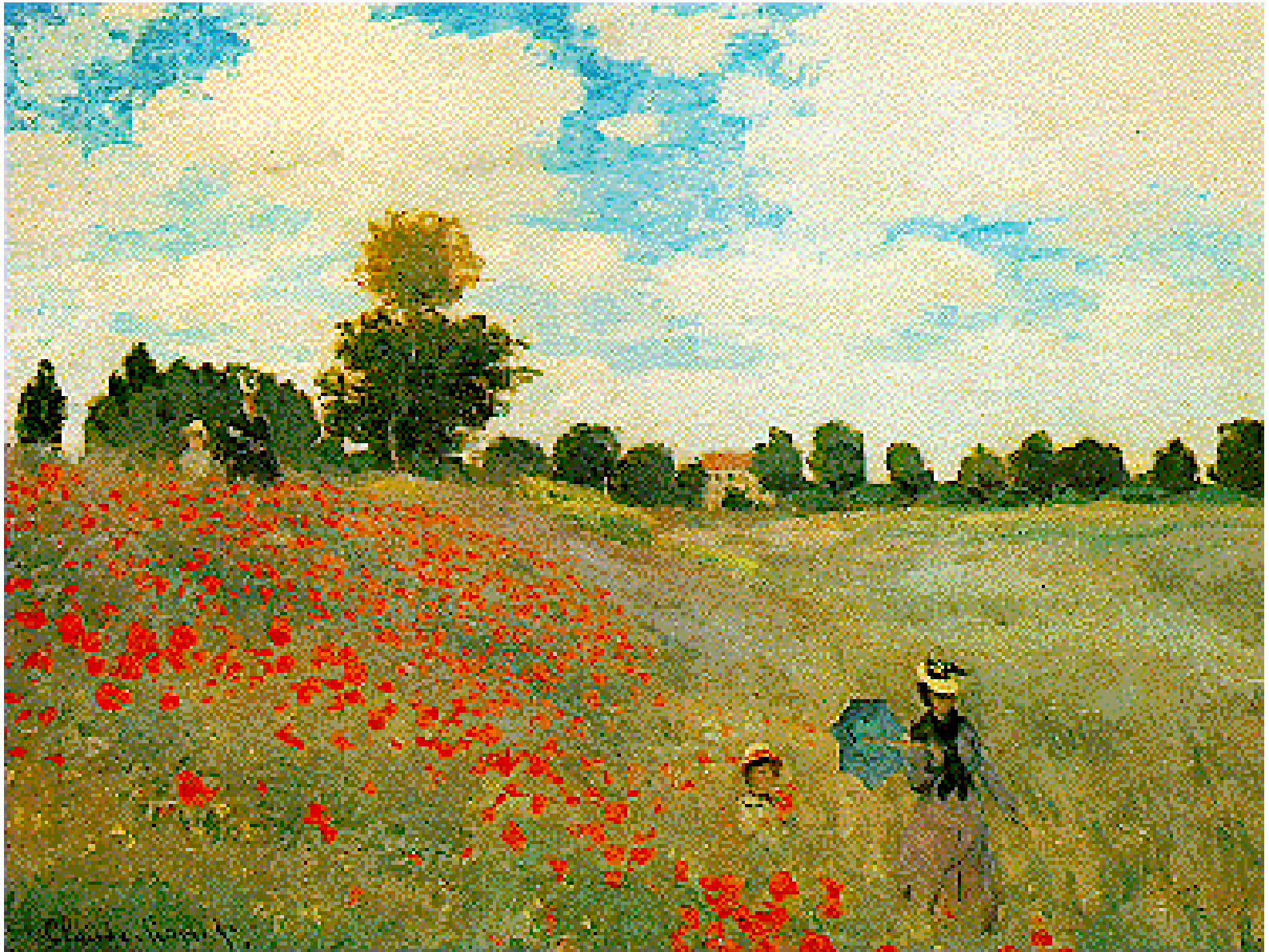
Edouard Manet, *Il bar delle Folies-Bergère*, 1881, Tate Gallery, Londra.



Claude Monet, *La cattedrale di Rouen. Pieno sole*, 1894; *La cattedrale di Rouen. Pieno sole, Armonia in blu e oro*, 1894; *La cattedrale di Rouen. Tempo grigio*, 1894.



Roy Lichtenstein, *Rouen Cathedral Set V*, 1969, Museum of Modern Art, San Francisco.



Claude Monet, *Papaveri*; vicino ad Argenteuil, 1873, Musée d'Orsay, Parigi



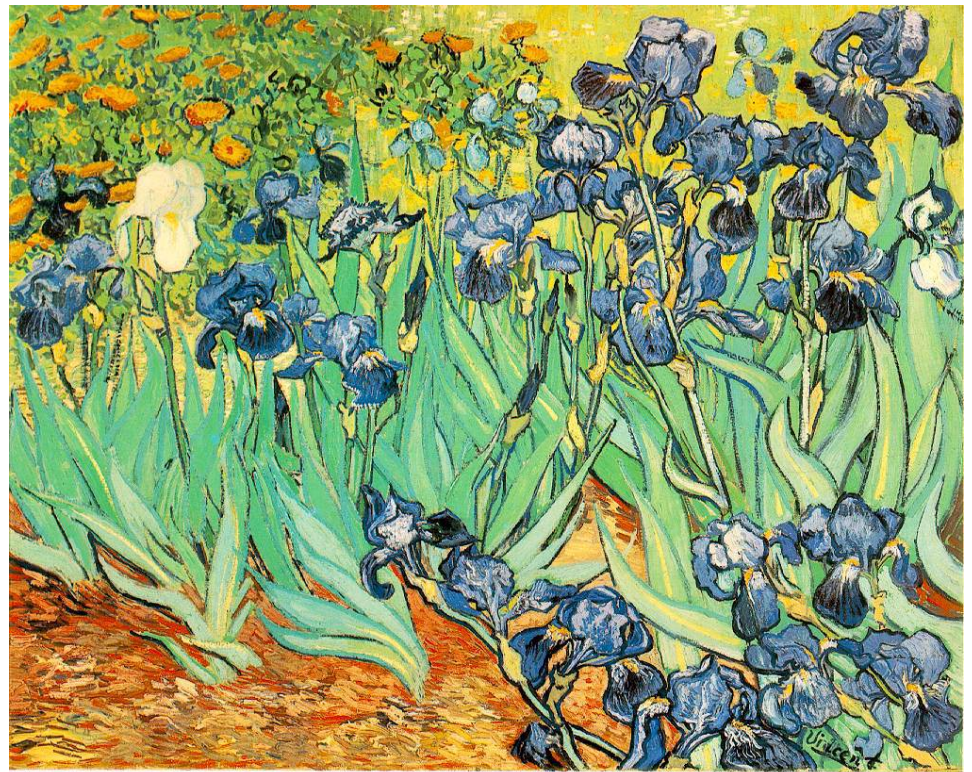
Claude Monet, *Le ninfee, Orangerie*, 1916-23, part.

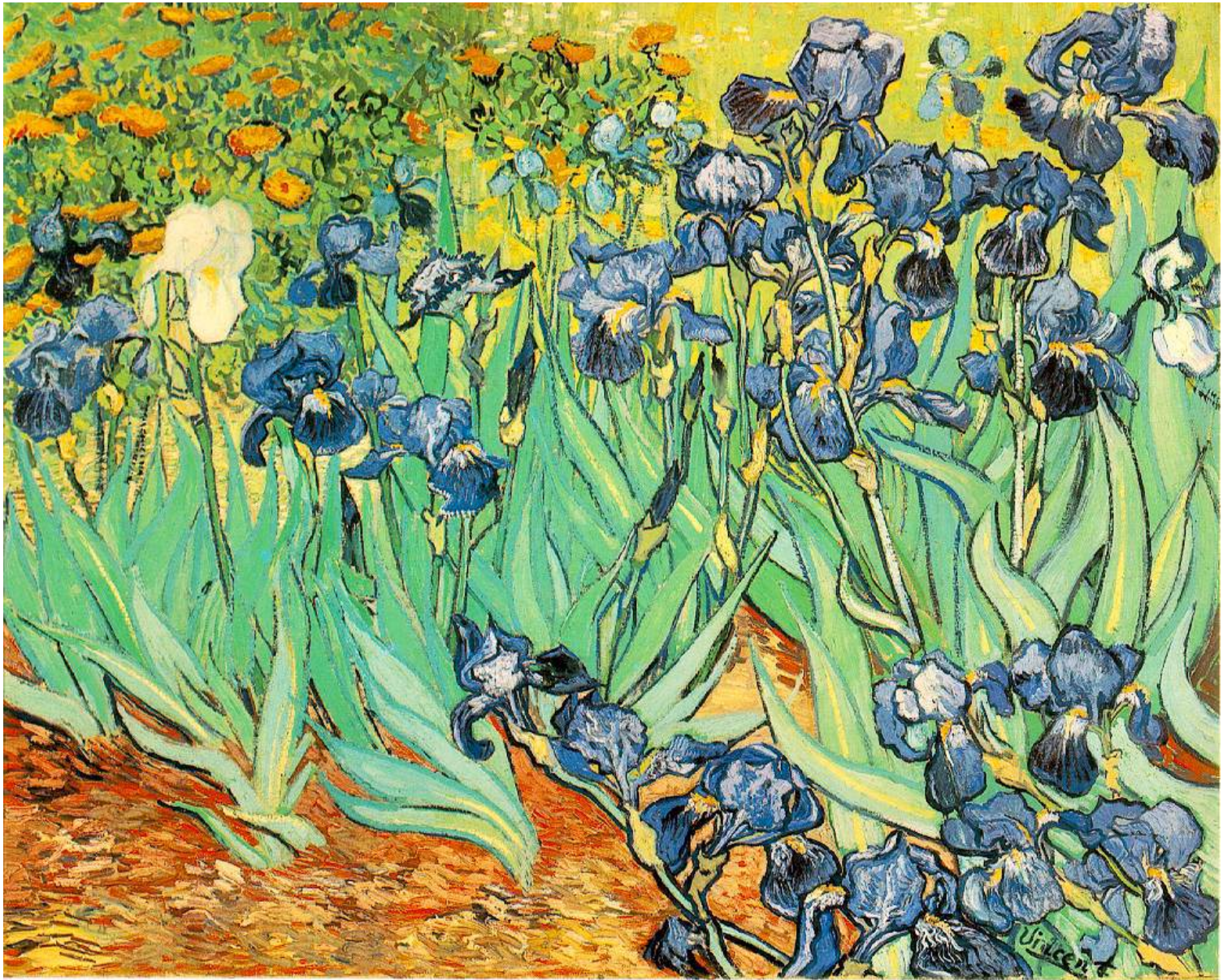


Claude Monet, *La sale delle ninfee* (1916-23) all' Orangerie.



Claude Monet, *Le ninfee, Il giardino a Giverny*, 1900, Musee d'Orsay, Parigi.





Vincent van Gogh, *Ireos*, 1889, Paul Getty Museum, California.



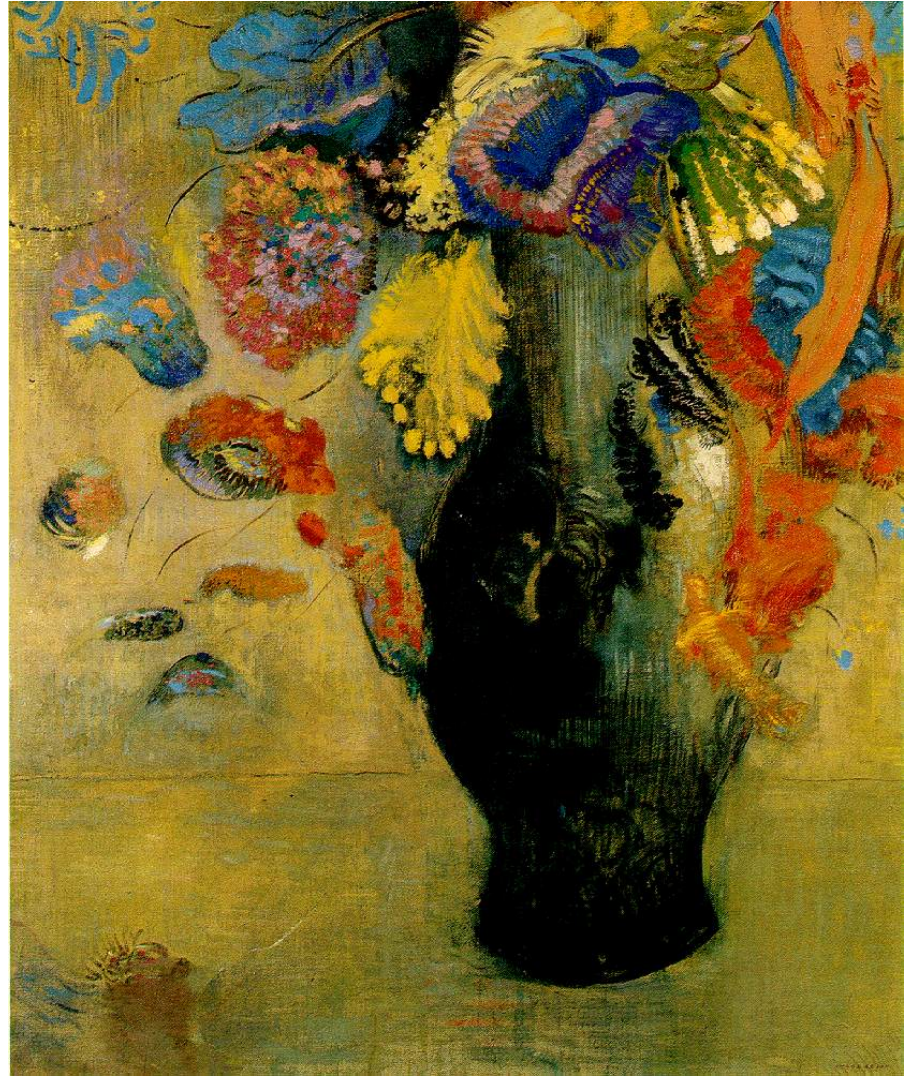
Albrecht Durer, *La zolla d'erba*, 1503, Graphische Sammlung Albertina, Vienna.



Vincent van Gogh, *Iris*, 1890, Rijksmuseum, Amsterdam.



Odilon Redon, *Fiori*, 1903 ca, Kunstmuseum St. Gallen, Svizzera.







Vincent van Gogh, *La camera ad Arles*, 1888, Vincent van Gogh Foundation, Amsterdam.



Vincent van Gogh, *La camera ad Arles*, 1889, Musee d'Orsay, Parigi.



Vincent van Gogh, *La camera ad Arles*, 1888 (da una lettera a Theo).





Marcel Duchamp, *Fresh Widow*, New York 1920, MOMA, New York.



Caravaggio, *La vocazione di san Matteo*, particolare.



Caravaggio, *La vocazione di san Matteo*, 1598-1600, Chiesa di San Luigi dei Francesi, Roma.



Vincent van Gogh, *Notte stellata*, 1889, MoMA, New York.



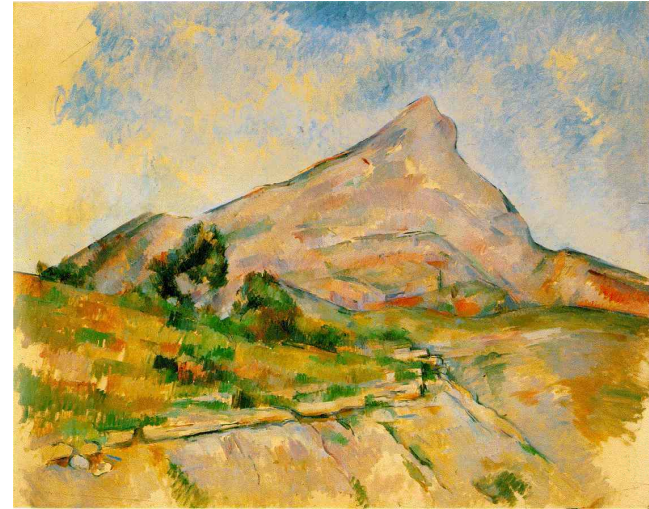
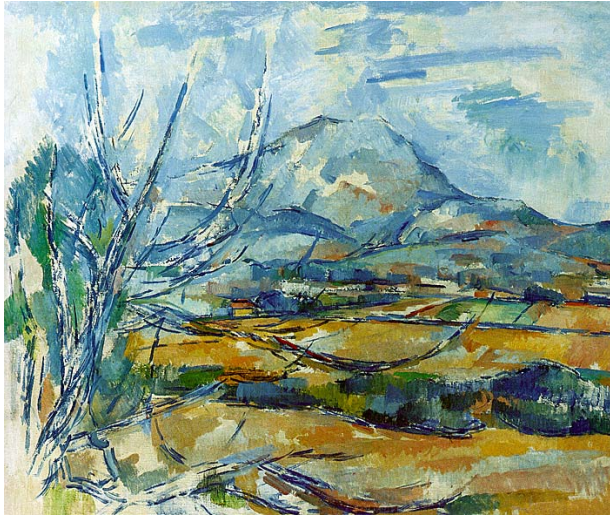
Jacob Isaacksz van Ruysdael, *Paesaggio con campo di grano*, 1650-70, Metropolitan Museum, New York.



Vincent van Gogh, *Campo di grano sotto un cielo minaccioso*, 1890, Vincent van Gogh Museum, Amsterdam.



Gachet, *Ritratto di van Gogh sul letto di morte*, luglio 1890.

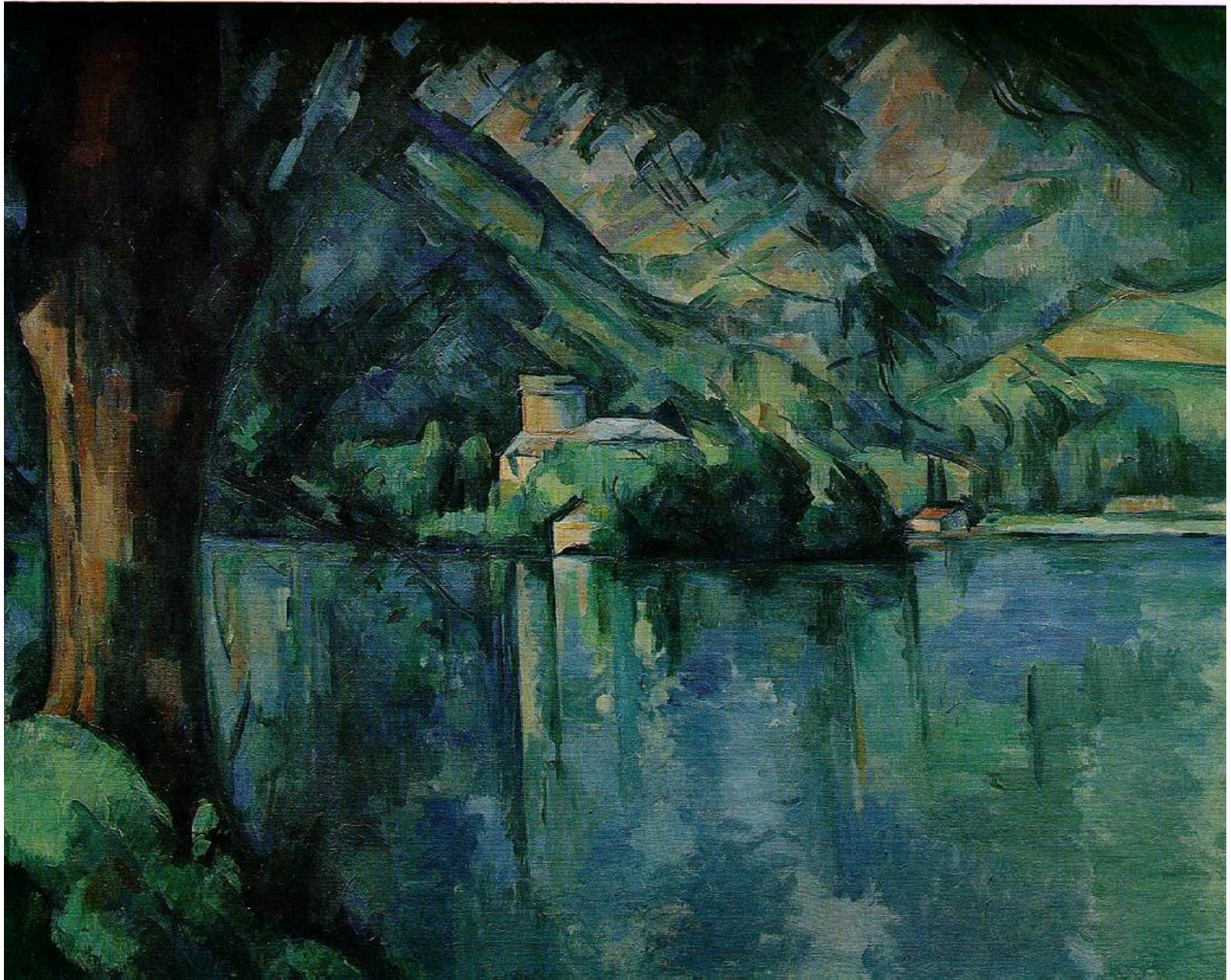


Paul Cezanne, *Montaigne Saint Victoire*: 1890-94, National Gallery of Scotland, Edimburgo; 1897-98, Hermitage, Pietroburgo; 1885-95, The Barnes Foundation, Merion (Pennsylvania); 1902-04, Philadelphia Museum of Art (da sinistra in alto).





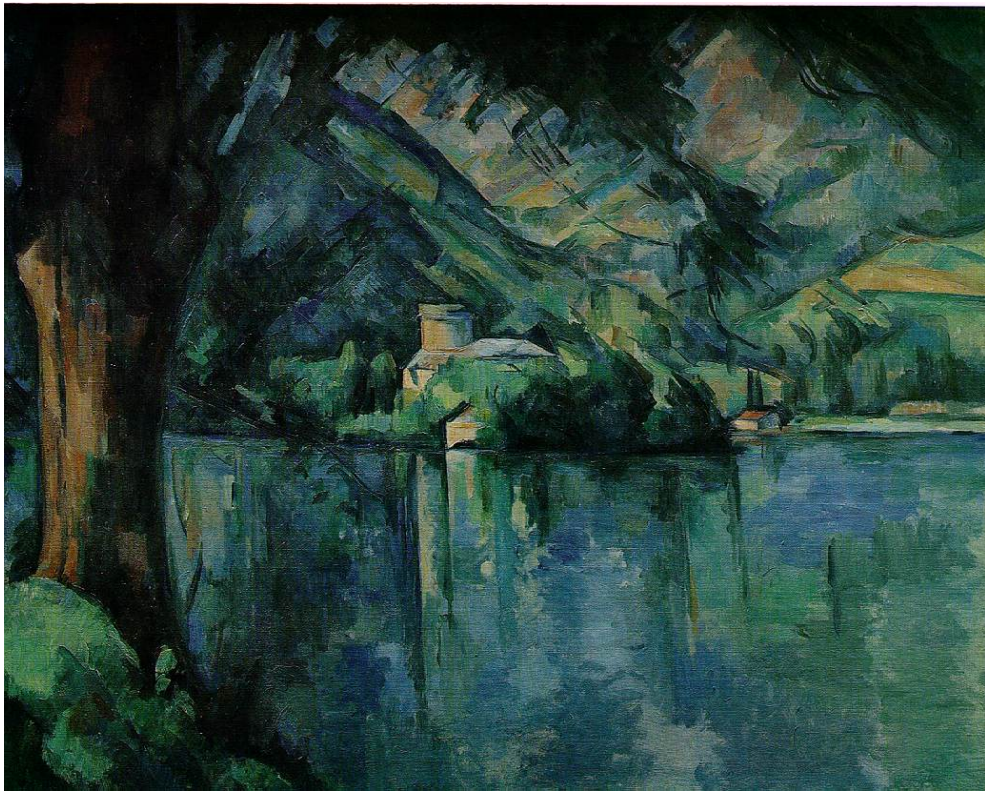
Hokusai Katsushika, *Mount Fuji in Clear Weather with a Southerly Breeze*, 1831, Rijksmuseum, Amsterdam.

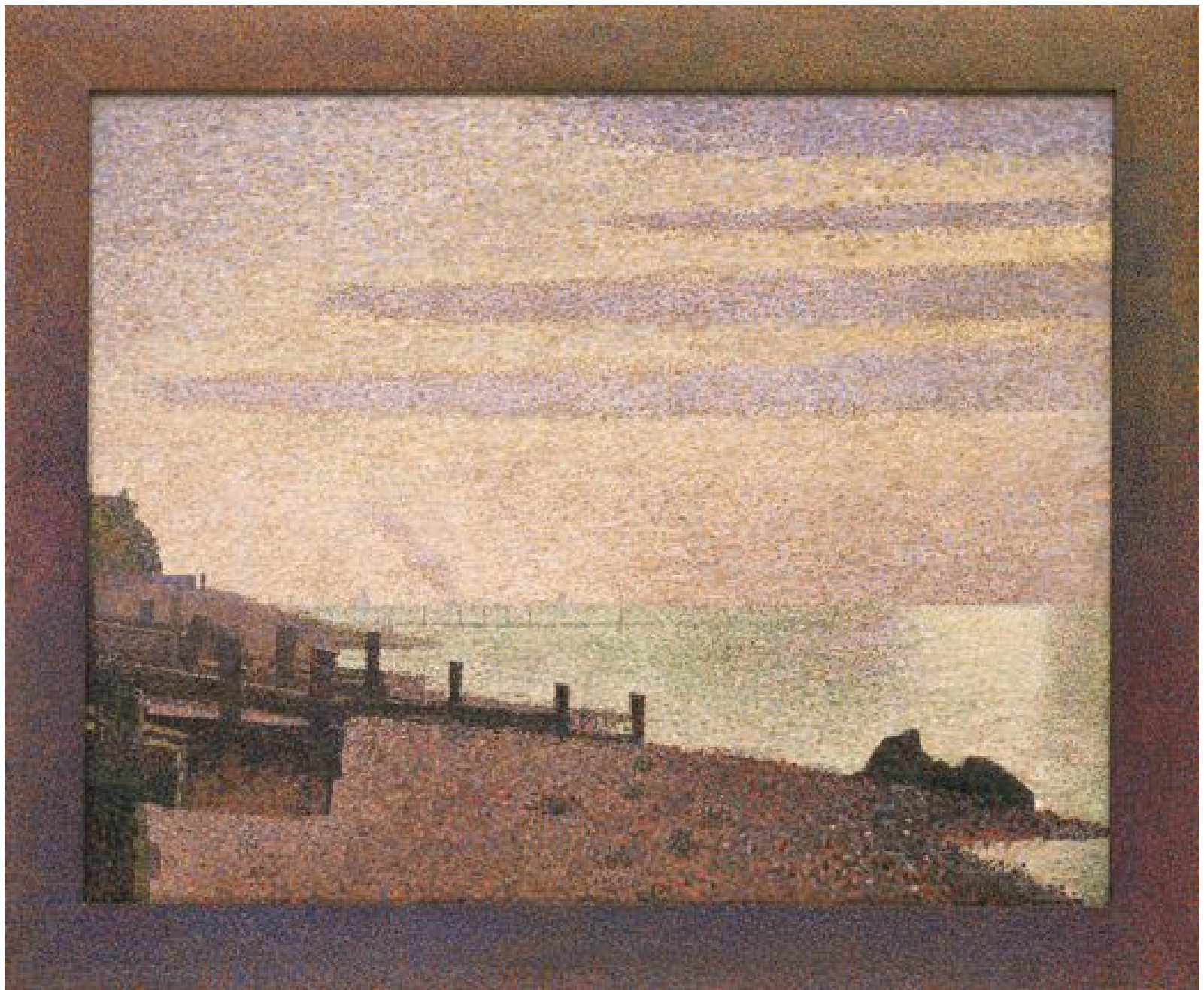


Paul Cezanne, *Il lago Annecey*, 1896, Courtauld Art Institute, Londra.



Pablo Picasso, *Natura morta con bottiglia di liquore*, 1909, MoMA, New York.





Georges Seurat, *Alba a Honfleur*, 1886, MoMA, New York,



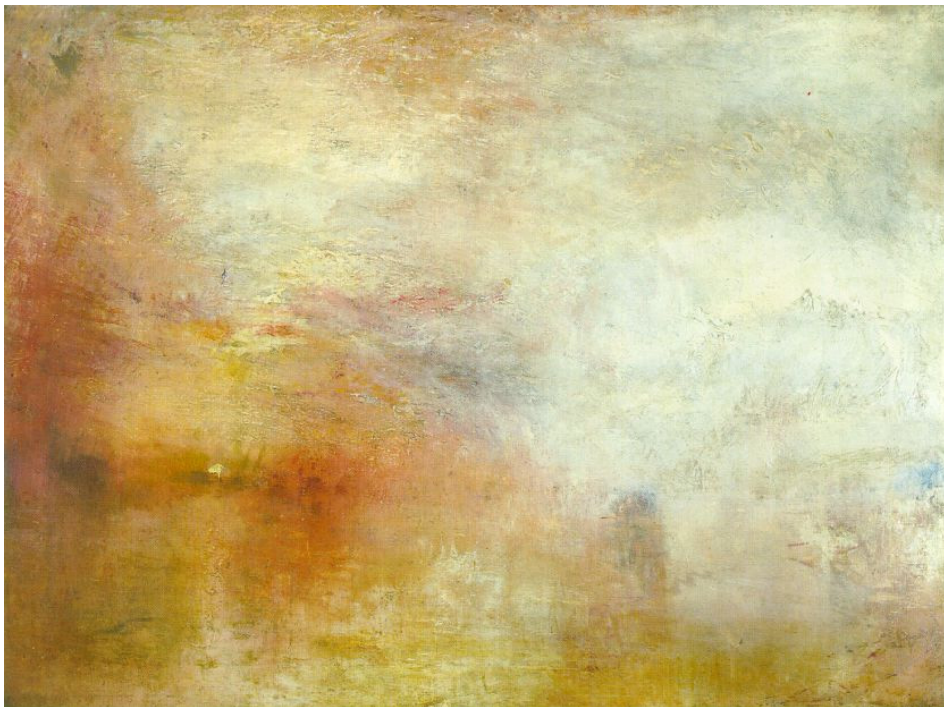
George Seurat, *Une dimanche après-midi a l'île de la Grande Jatte*, 1884-86, Art Institute, Chicago.



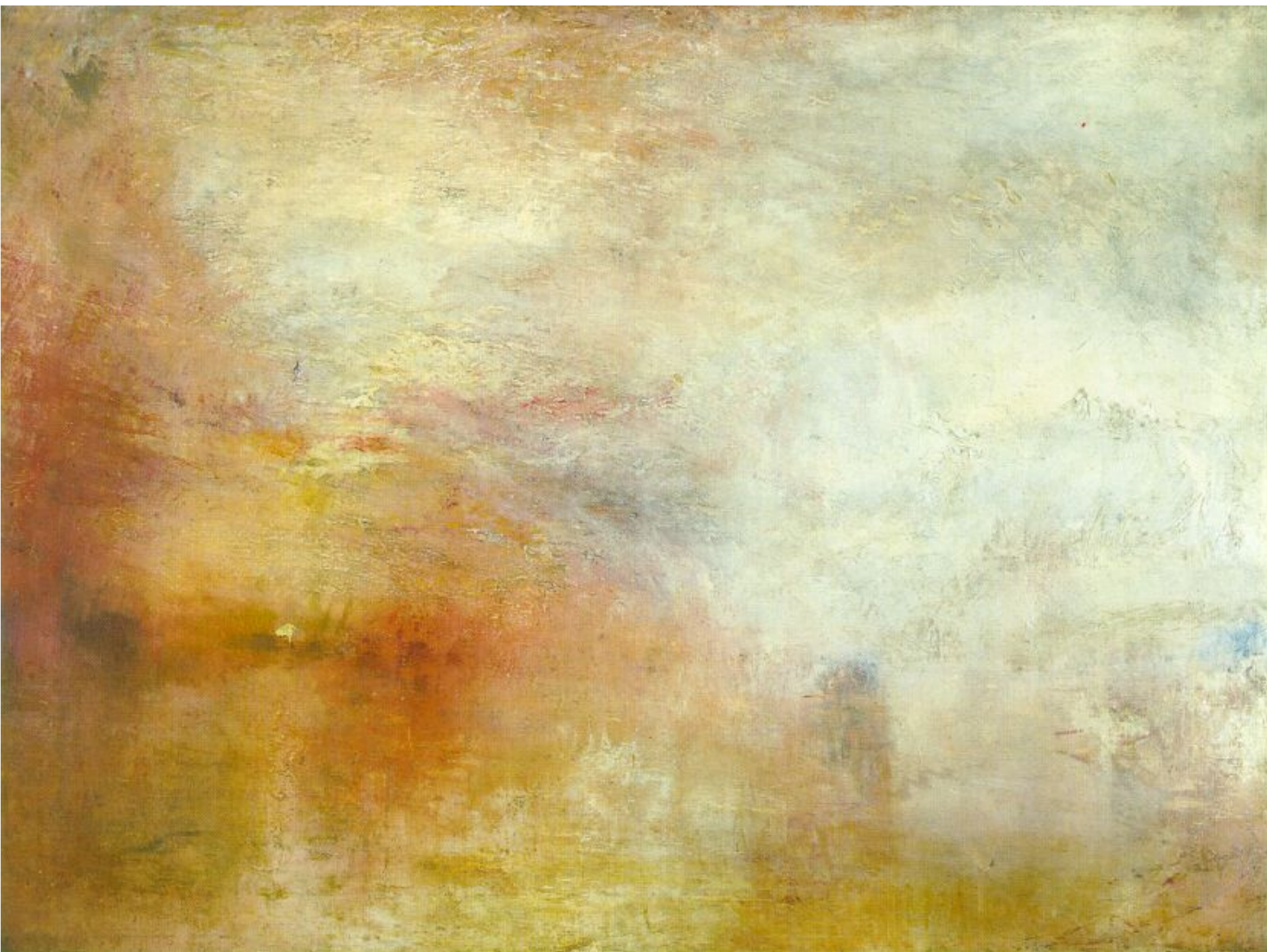
Joseph Mallord Turner, *Shade and Darkness (Goethe's Theory) - the Evening of the Deluge*, 1843, Tate Gallery, Londra.

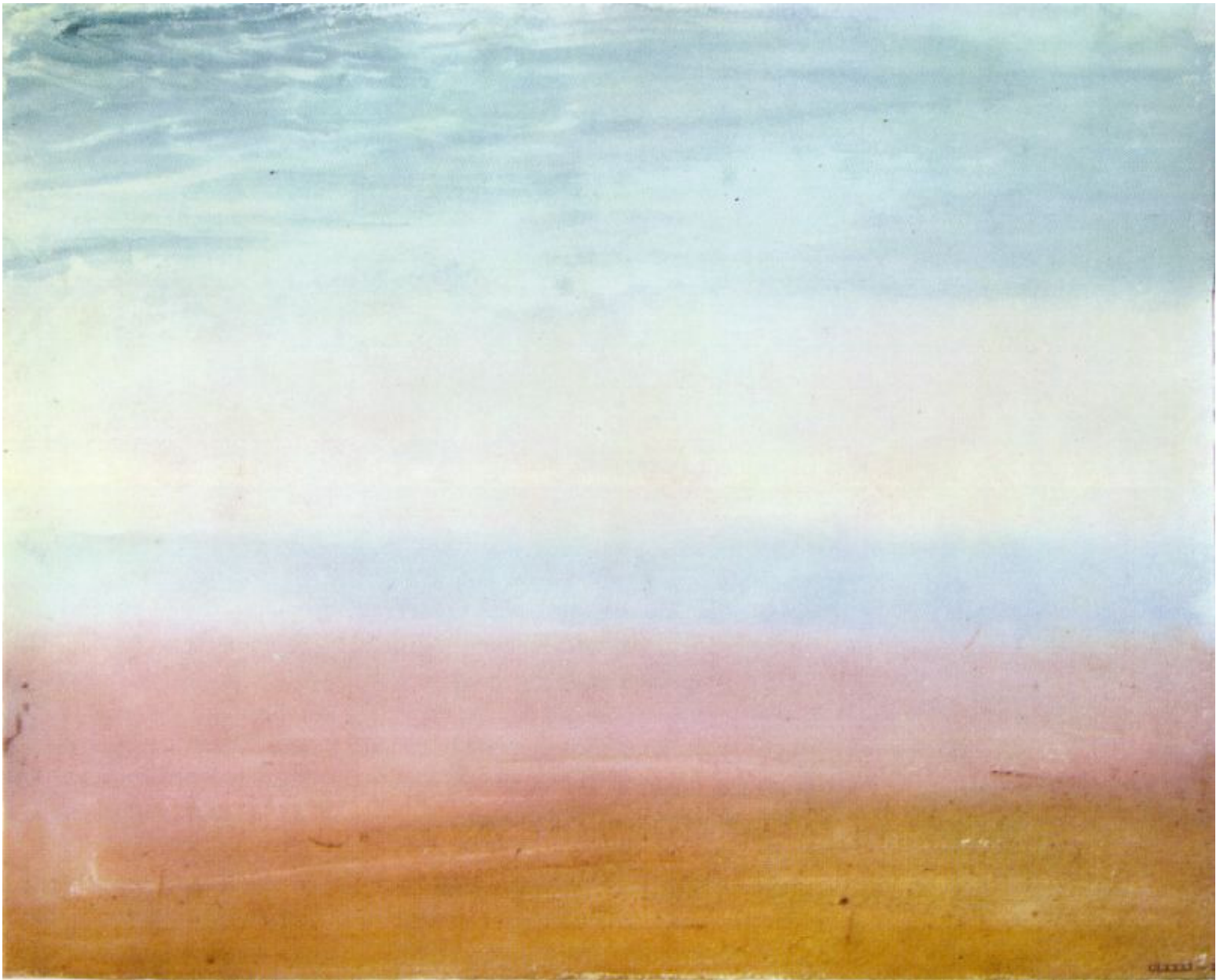


Joseph Mallord Turner, *Light and Colour (Goethe's Theory) - the Morning after the Deluge - Moses Writing the Book of Genesis*, 1843, Tate Gallery, Londra.



Joseph Mallord Turner, *Sun Setting over a Lake*, 1840 ca., Tate Gallery, Londra.
Joseph Mallord Turner, *Sunrise with Sea Monsters*, 1845 ca., Tate Gallery, Londra.





Joseph Mallord William Turner, *Colour Beginning*, 1819 Tate Gallery, Londra.



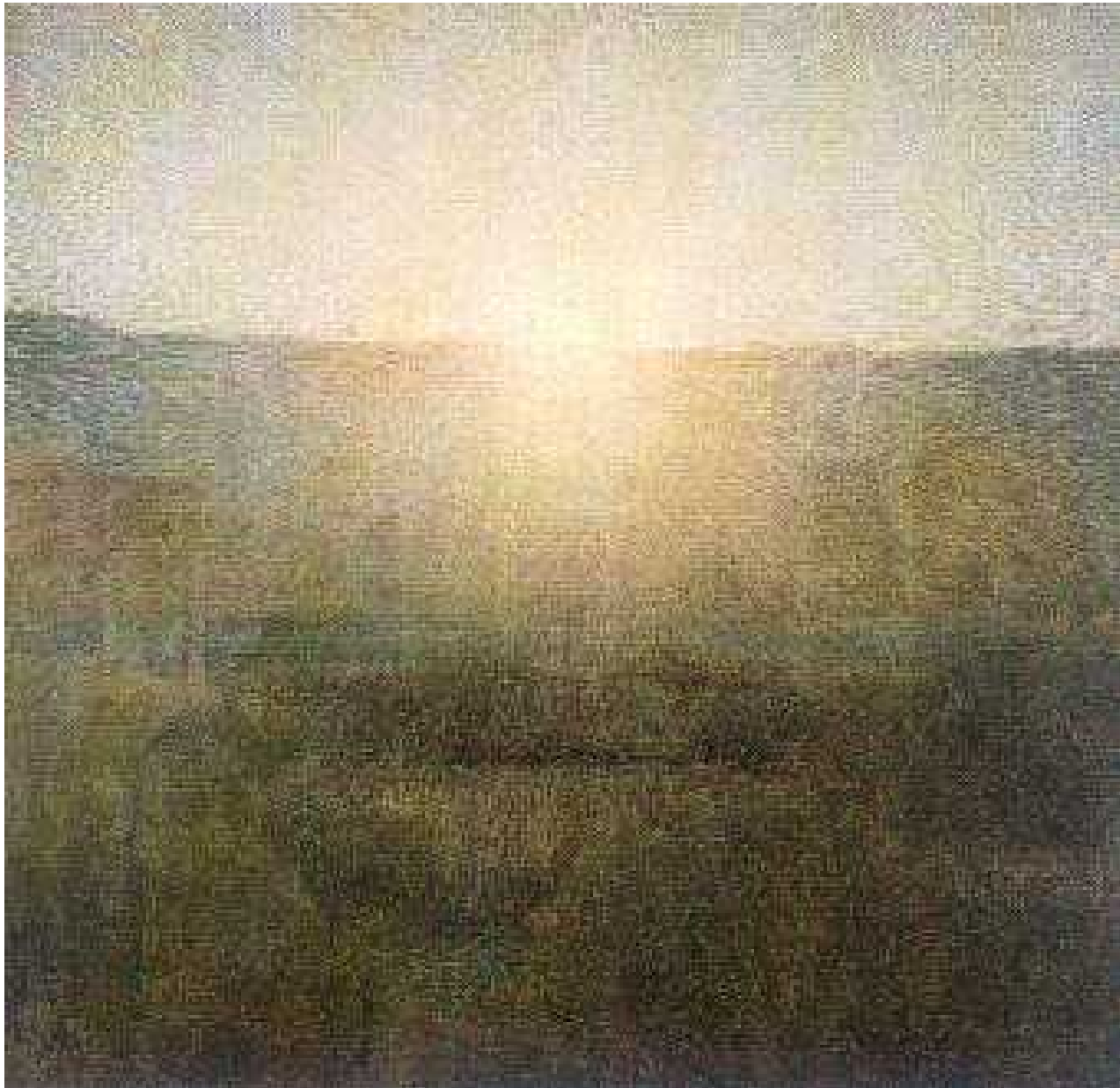
Mark Rothko, *Orange and Yellow*, 1956, Albright-Knox Art Gallery, New York.



Mark Rothko, *No. 14, 1960*, 1960, MoMA, New York.



Joseph Mallord Turner, *Norham Castle, Sunrise*, 1845 ca, Tate Gallery, Londra.



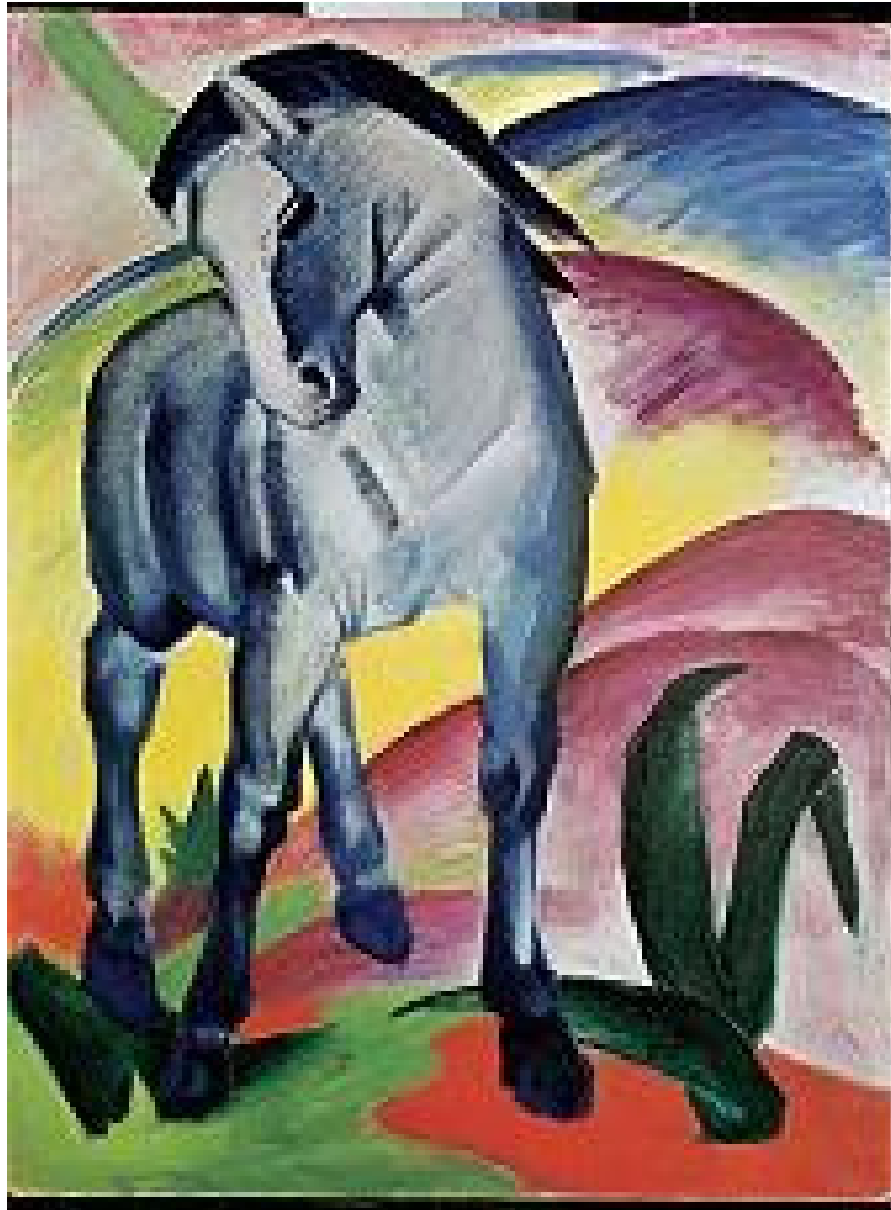
Pellizza da Volpedo, *Sole nascente*, 1904, Galleria Nazionale d'Arte Moderna, Roma.



Paul Gauguin, *Femmes de Tahiti (Sur la plage)*, 1891, Musee d'Orsay, Parigi.



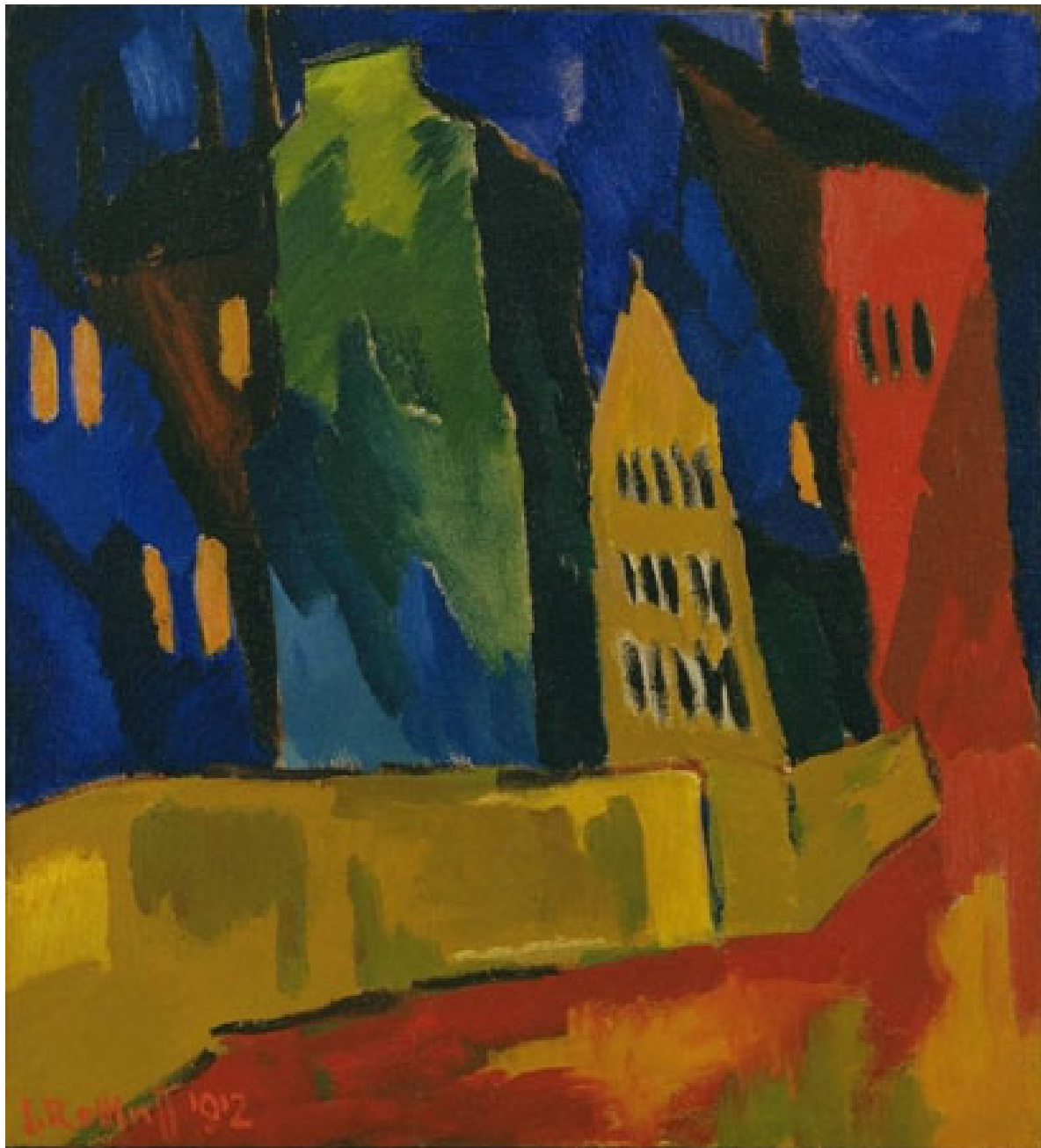
Paul Gauguin, *Ararea (Senza gioia)*, 1892, Musee d'Orsay, Parigi.



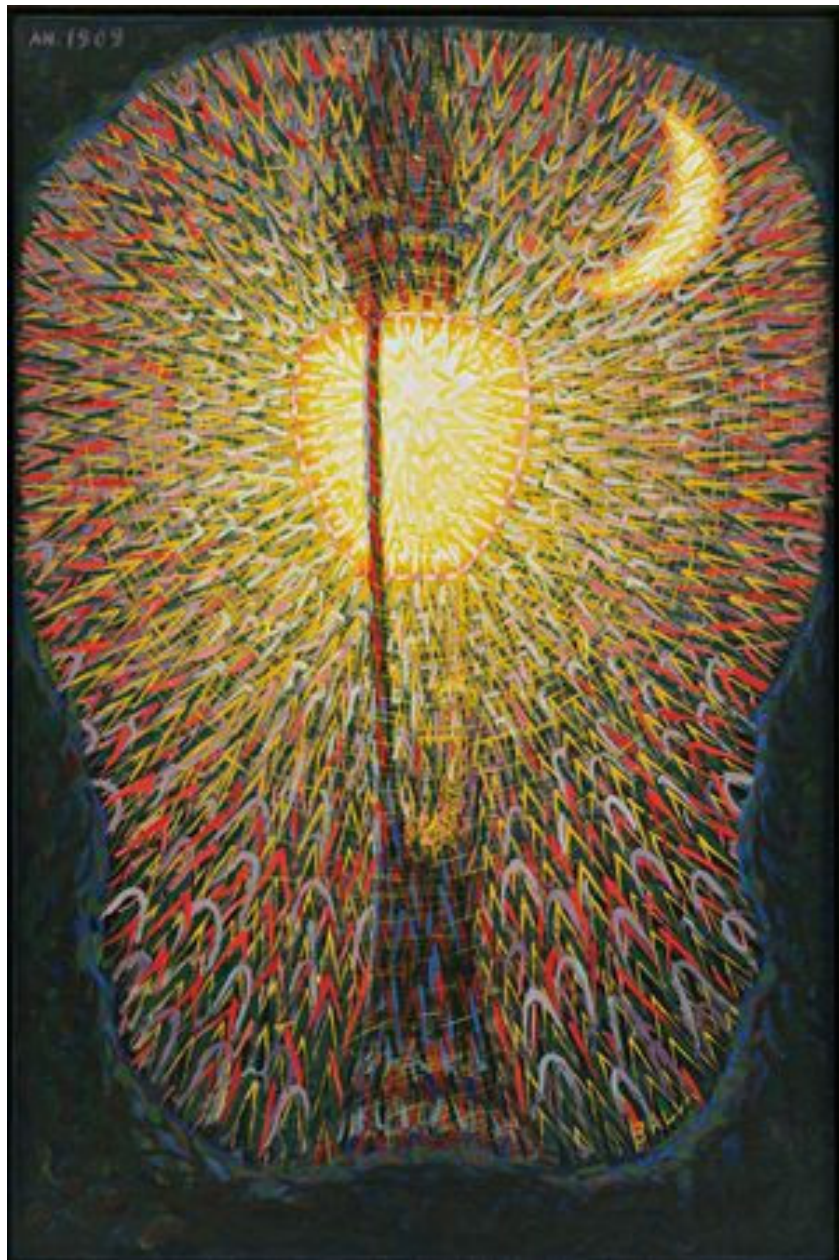
Franz Marc, *Blaues Pferd*, 1911, Lenbachhaus, Monaco.



Ernst Ludwig Kirchner, *Der Rote Turm von Halle*, 1911, Folkwang Museum, Essen.



Karl Schmidt-Rottluff, *Case nella notte*, 1912, MoMA, New York.



Giacomo Balla, *Fanale stradale*, 1910-11 ca, MoMA, New York.



Robert Delaunay, *Contrasti simultanei - Sole e luna*, 1913, MoMA, New York.



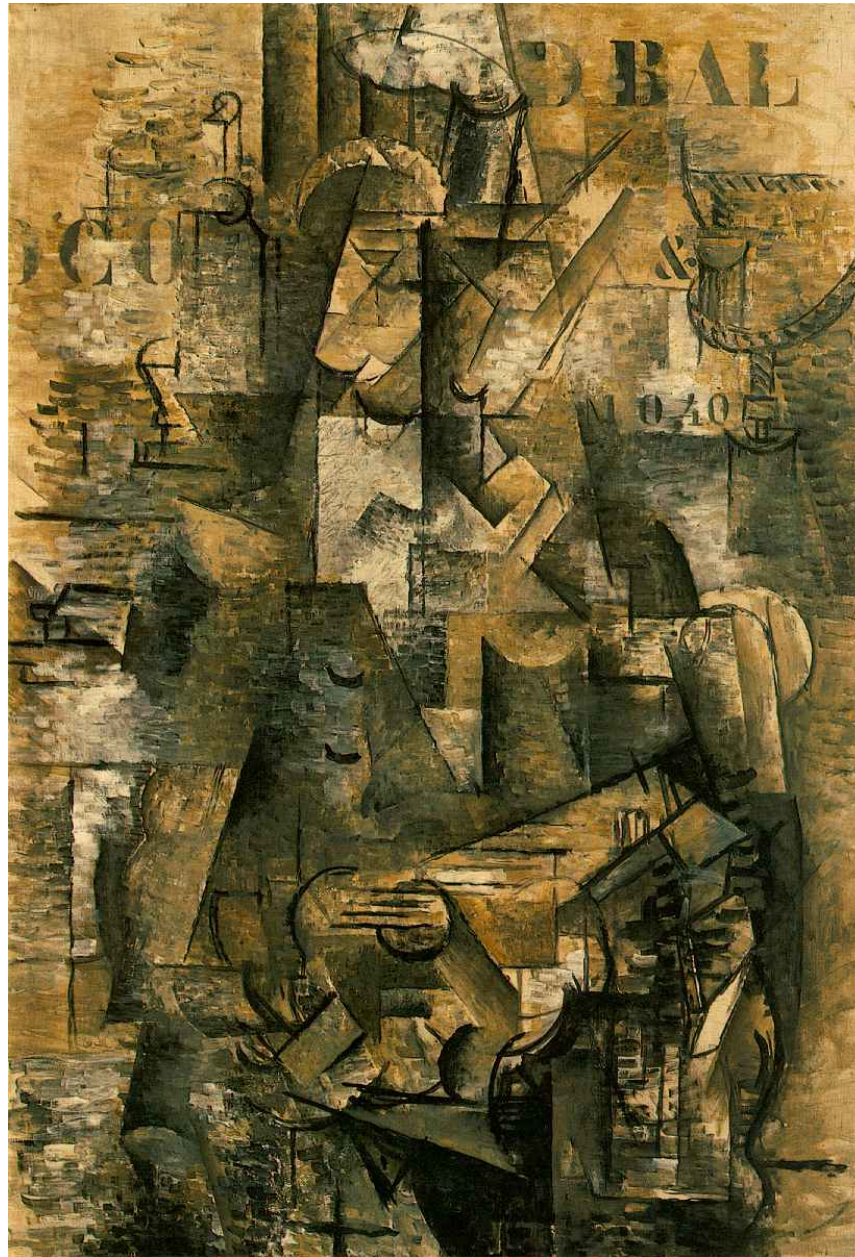
Robert Delaunay, *Fenêtres*, 1912, MoMA, New York.



Umberto Boccioni, *Costruzione orizzontale*, 1912, Pinakothek der Moderne, Monaco.



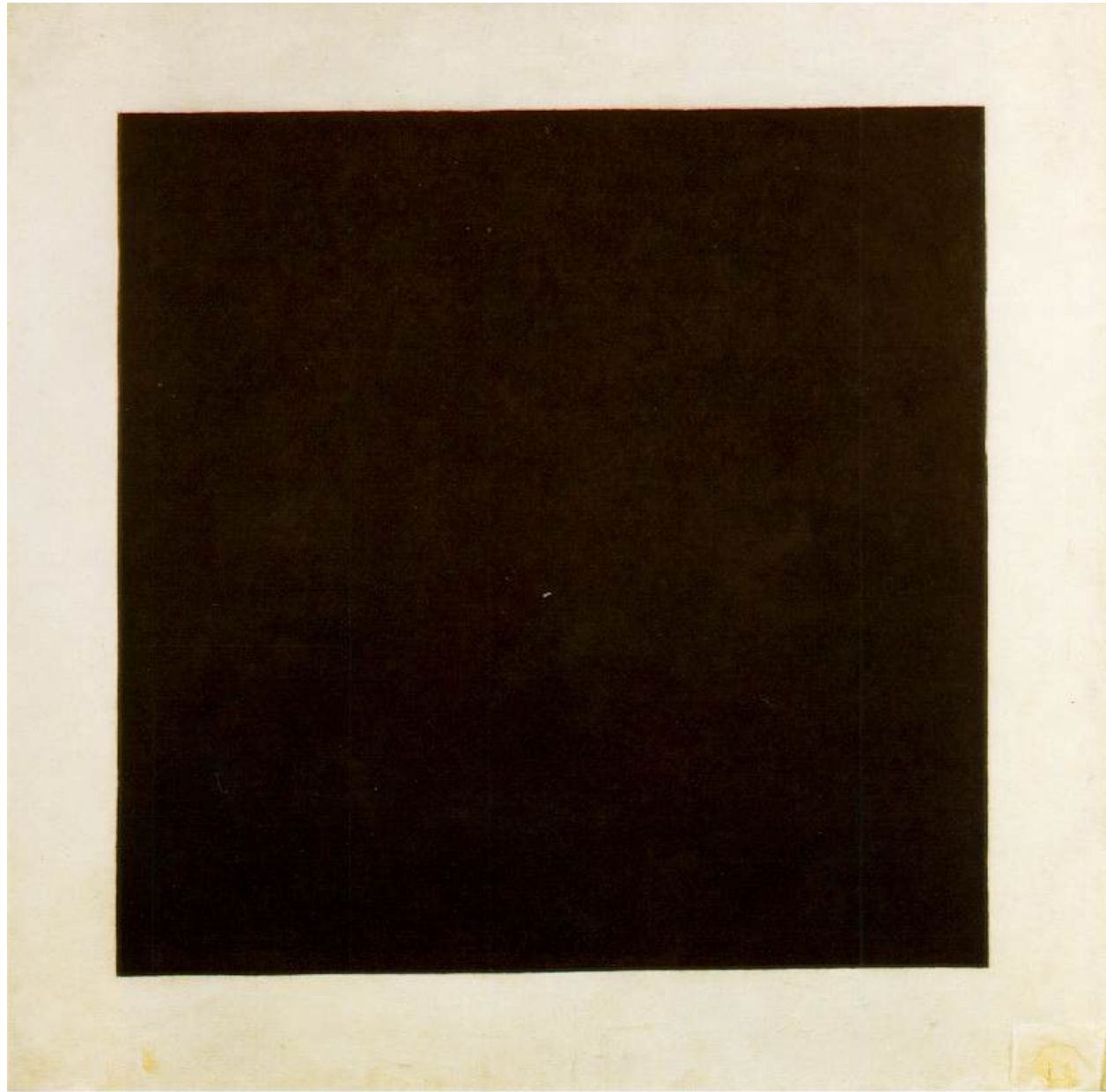
Pablo Picasso, *Il suonatore di violino*, 1910, MoMA, New York.



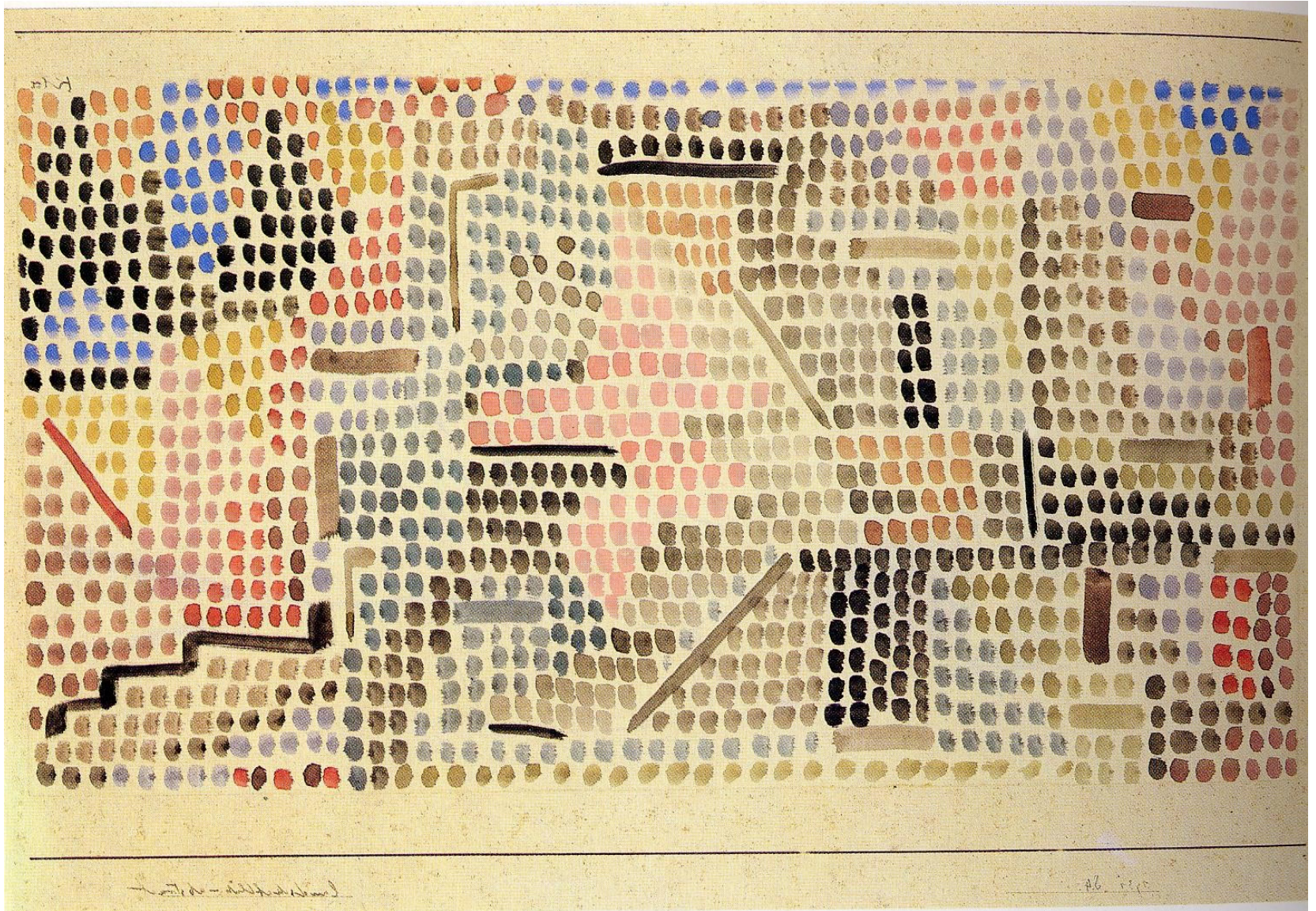
Georges Braque, *Le Portugais*, 1911-12, Kunstmuseum, Basilea.



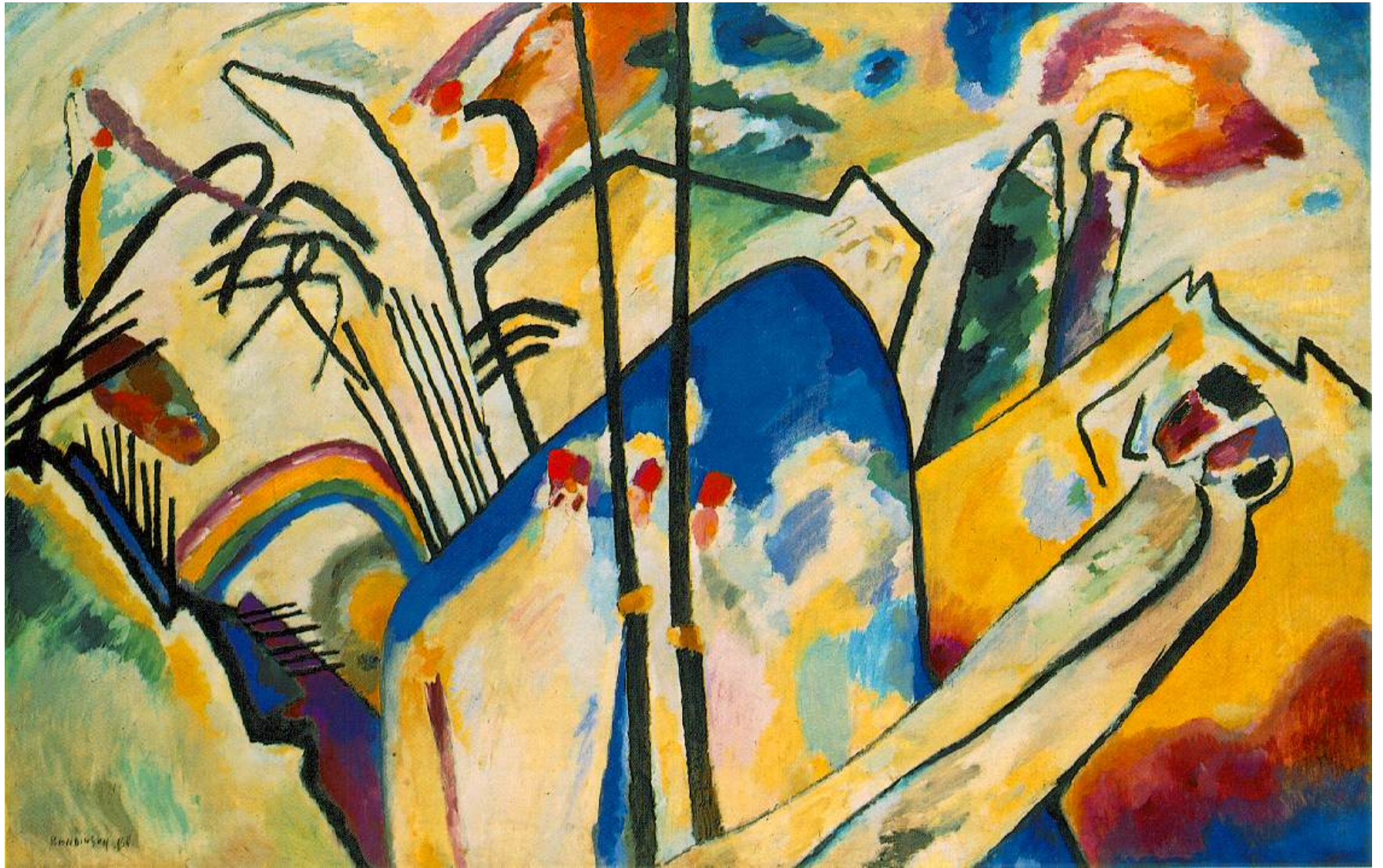
Juan Gris, *Le lavabo*, 1912, Collection Vicomtesse de Noailles, Parigi.



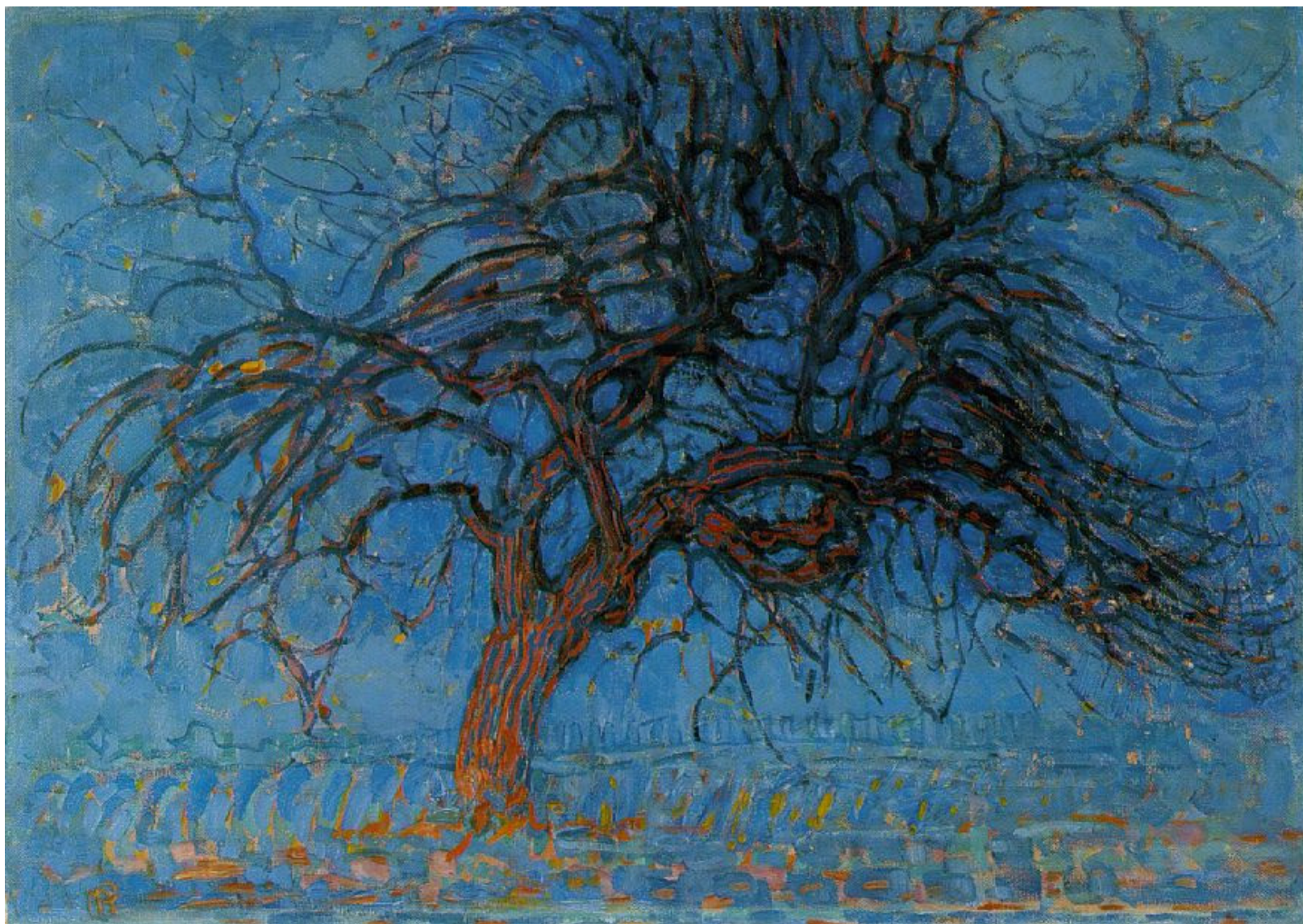
Kazimir Malevich, *Quadrato nero suprematista*, 1923-29 (1913), State Russian Museum, San Pietroburgo.



Paul Klee, *Landschaftlich-Abstract*, 1931, coll. privata.



Wassily Kandinsky, *Composition IV*, 1911, Kunstammlung Nordrhein-Westfalle, Duesseldorf.



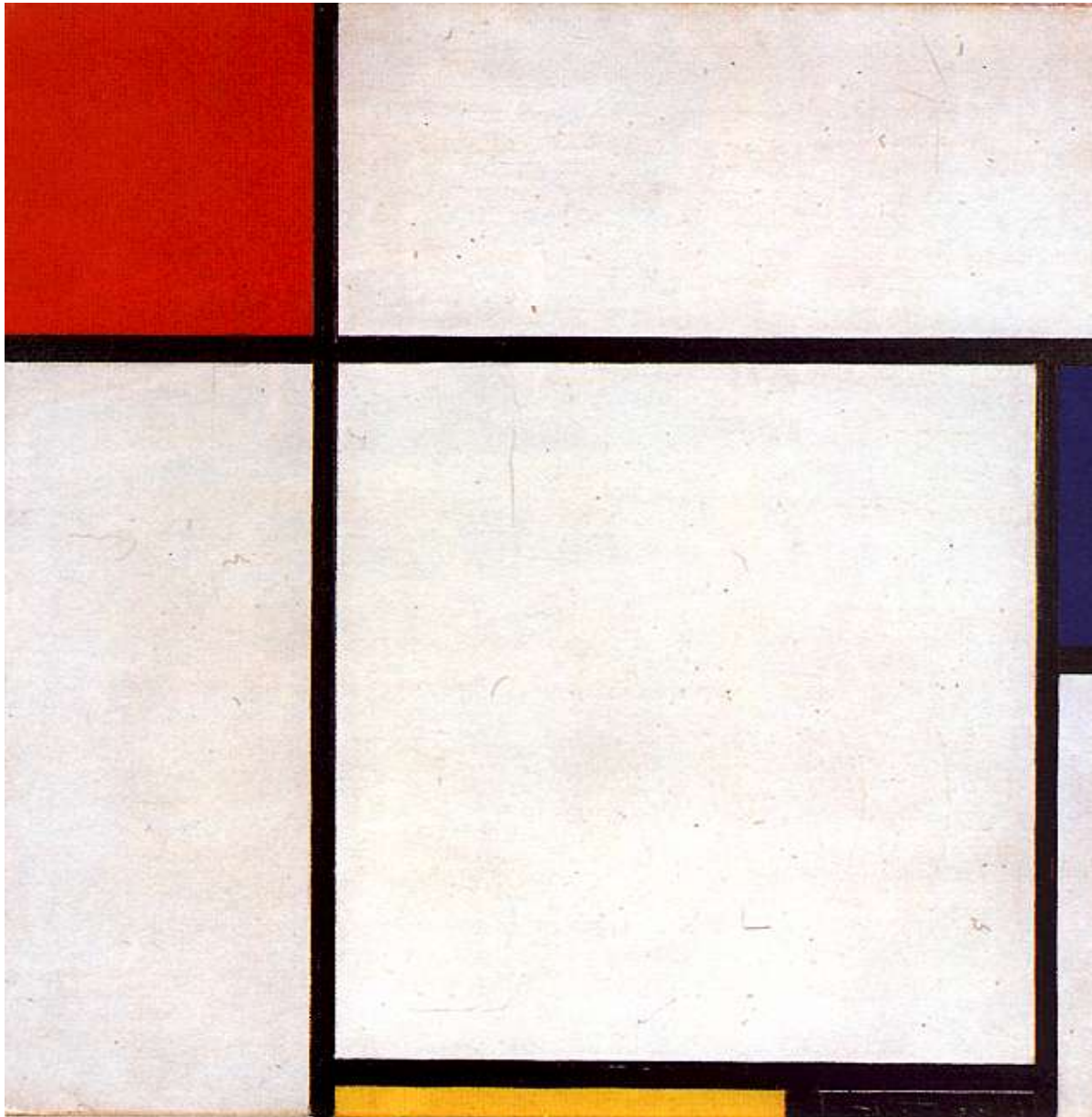
Piet Mondrian, *Avond (Evening). Red Tree*, 1908, Haags Gemeentemuseum, The Hague.



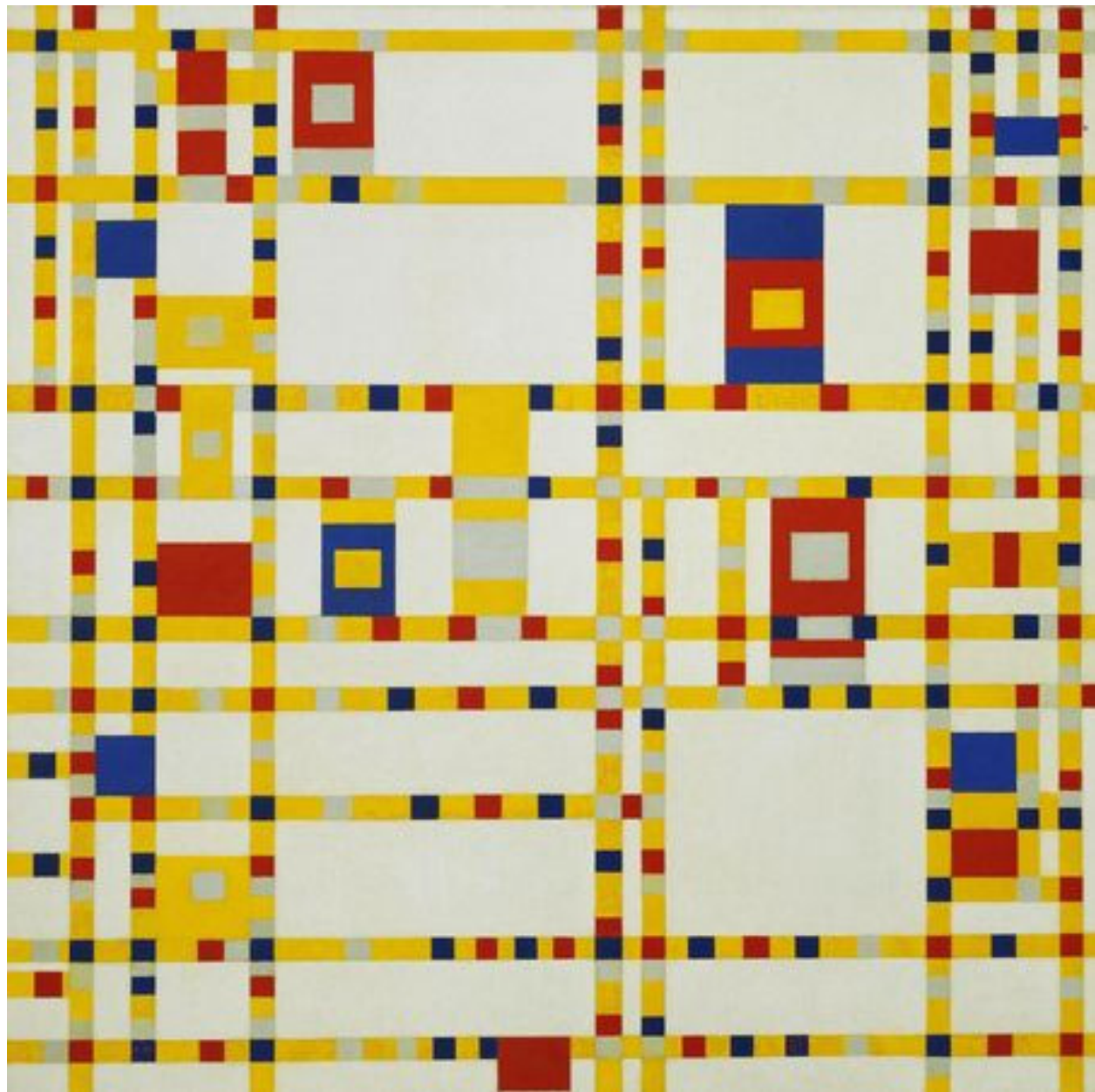
Piet Mondrian, *Gray Tree*, 1911, Haags Gemeentemuseum, The Hague.



Piet Mondrian, *Quadro n 2- Composizione V*, 1914, MoMA, New York.



Piet Mondrian, *Composizione*, 1929, MoMA, New York.



Piet Mondrian, *Broadway Boogie Woogie*, 1942-43, MoMA, New York.



Edward Hopper, *Gas*, 1940, MoMA, New York.



Edward Hopper, *Morning Sun*, 1952, Columbus Museum of Art, Ohio.



Edward Hopper, *Sun in an Empty Room*, 1963, coll. Privata.



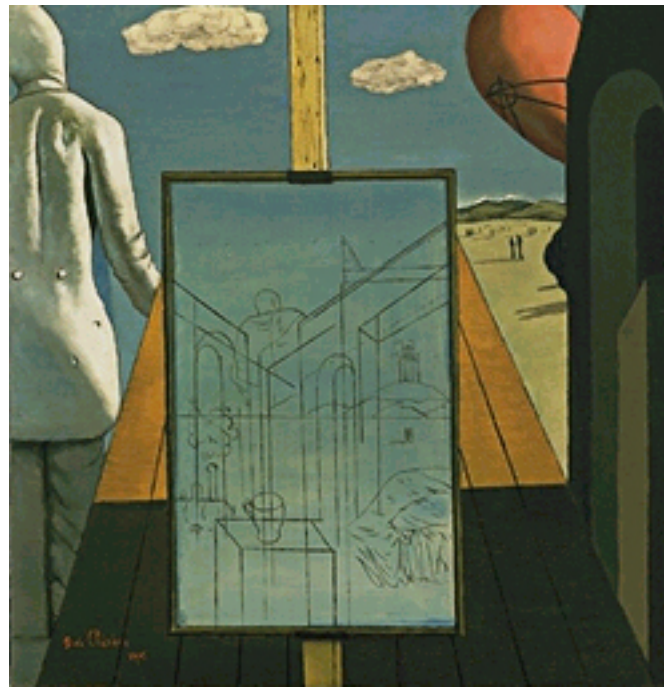
René Magritte, *La condition humaine*, 1933, The National Gallery of Art, Washington.



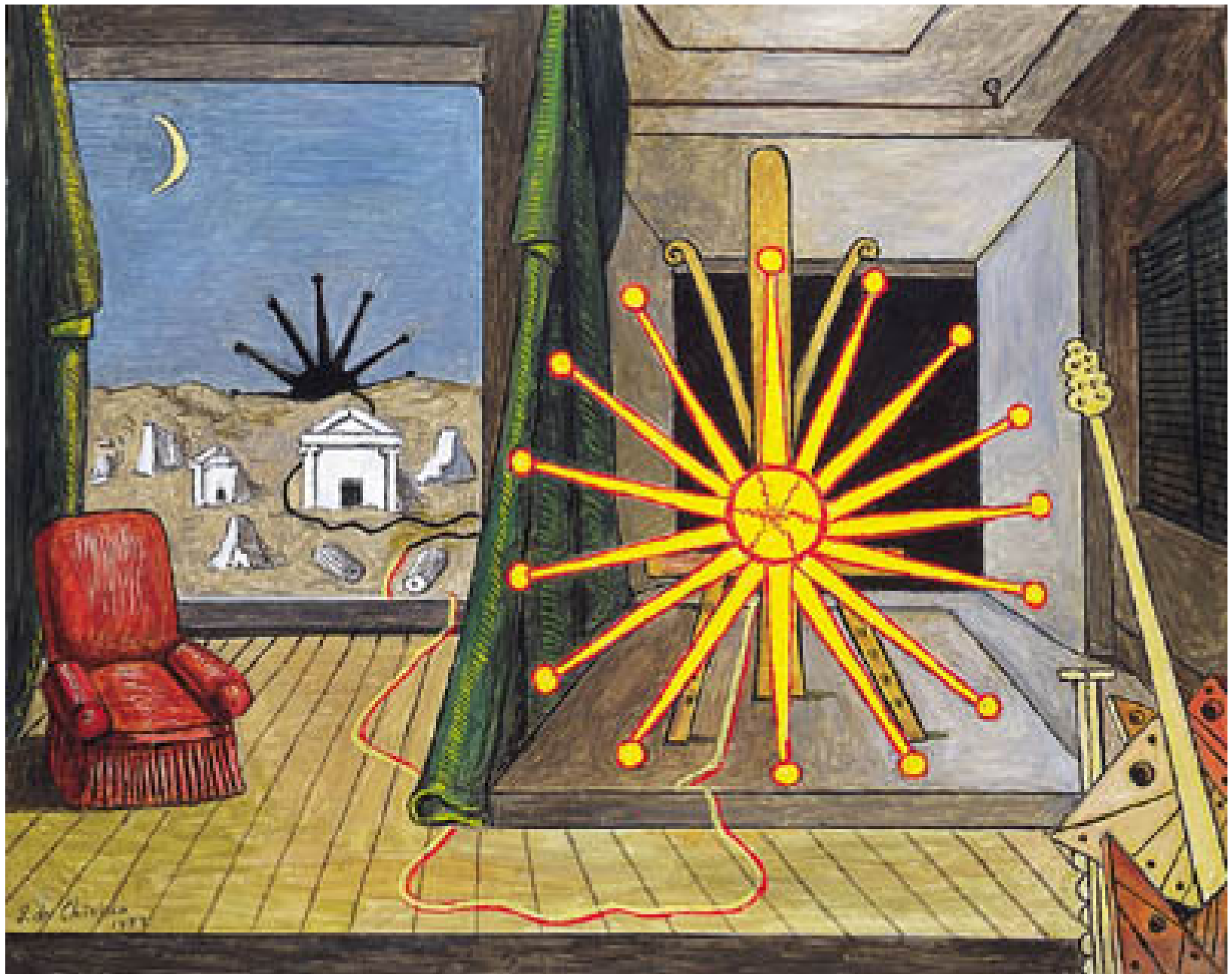
René Magritte, *L'Empire des lumières*, 1953-54, The Solomon Guggenheim Museum, New York.



Giorgio de Chirico, *L'enigma di un giorno*, 1914, MoMA, New York.



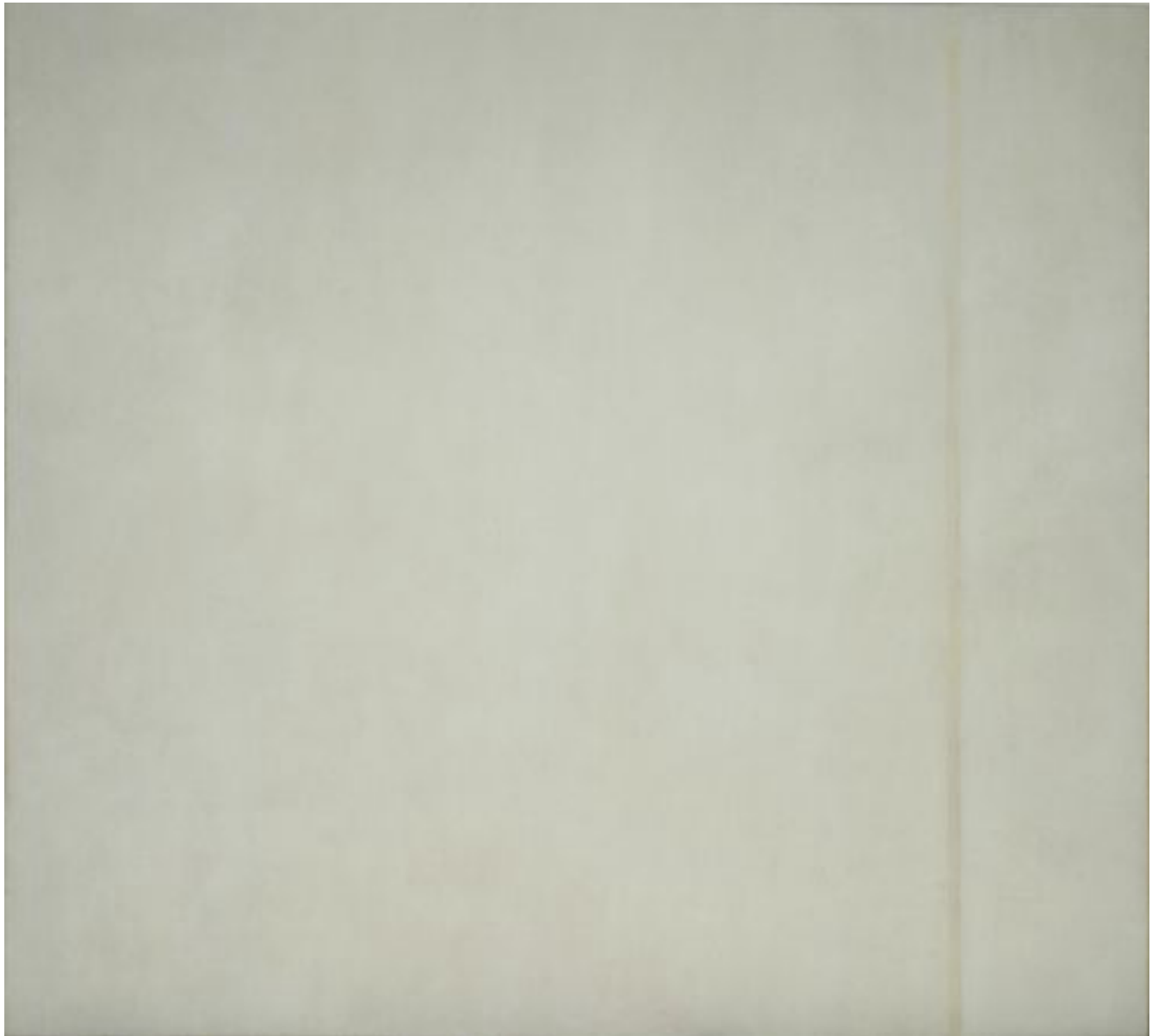
Giorgio de Chirico, *Interno metafisico con grossa fabbrica*, 1916, Staatsgalerie, Stoccarda. Giorgio de Chirico, *Le double reve du printemps*, 1915, MoMA, New York. Giorgio de Chirico, *Grande interno metafisico*, 1917, MoMA, New York.



Giorgio de Chirico, *Sole sul cavalletto*, 1972, Fondazione Giorgio e Isa de Chirico, Roma.



Barnett Newman, *Abraham*, 1949, MoMA, New York.



Barnett Newman, *The Voice*, 1950, MOMA, New York.



Jackson Pollock, *White Light*, 1954, MoMA, New York.



Andy Warhol, *Campbell's Tomato Soup*, (from a Banner), 1968, Fine Arts Museums, San Francisco.



Andy Warhol, *Untitled, from Marilyn Monroe*, 1967, MoMA, New York.



Andy Warhol, *Empire* (frame dal film omonimo), 1964, MoMA, New York.



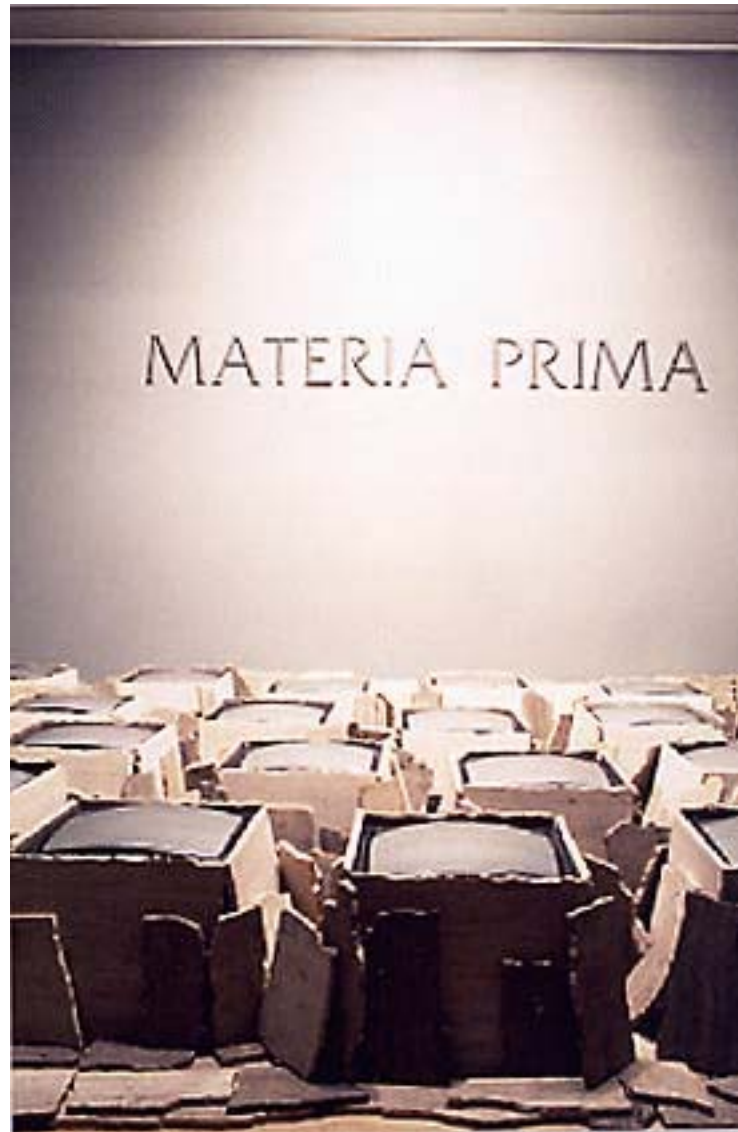
Andy Warhol, *Electric Chair*, 1967, National Gallery of Art, Canberra.



George Segal, *The Parking Garage*, 1968, The Newark Museum, New Jersey.



Dan Flavin, *Diagonal of May 25 1963*, 1963.



Fabrizio Plessi, *Materia prima*, 1989.



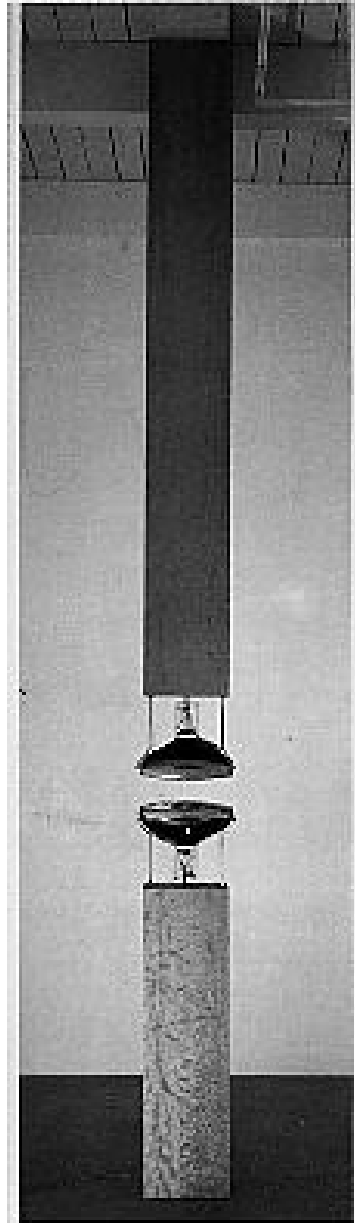
Decentered Television Reality (da *Posthuman*, a cura di Jeffrey Deitch, 1992).



Lucio Fontana, *Concetto spaziale*, 1958.



Wolf Vostel, *Tv-dé-collage*, n 1, 1958, Fine Art Rafael Vostell, Berlino (foto elf).



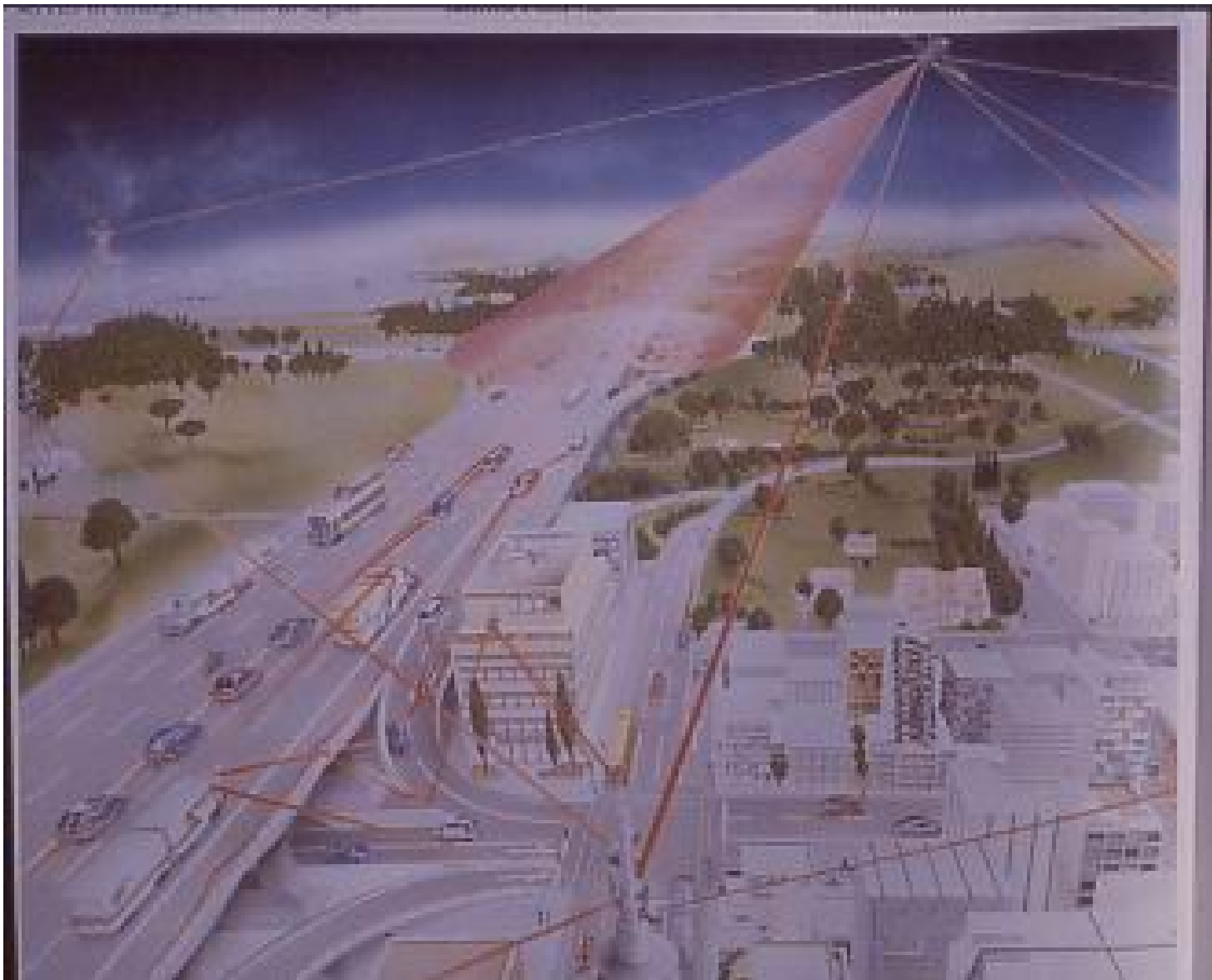
Bill Viola, *Heaven and Hearth*, 1992.



Bill Viola, *Heaven and Heart* (part.), 1992.



Stanley Kubrick, 2001. *Odissea nello spazio*, 1968.



D.I.O., Dispositivo Informatico Onniscente.



Ed Ruscha, *Cours Empire*, Biennale di Venezia 2005.



Jenny Holzer, *Protect me from what I want*, dalla serie *Survival*, 1986, Times Square, Londra.